



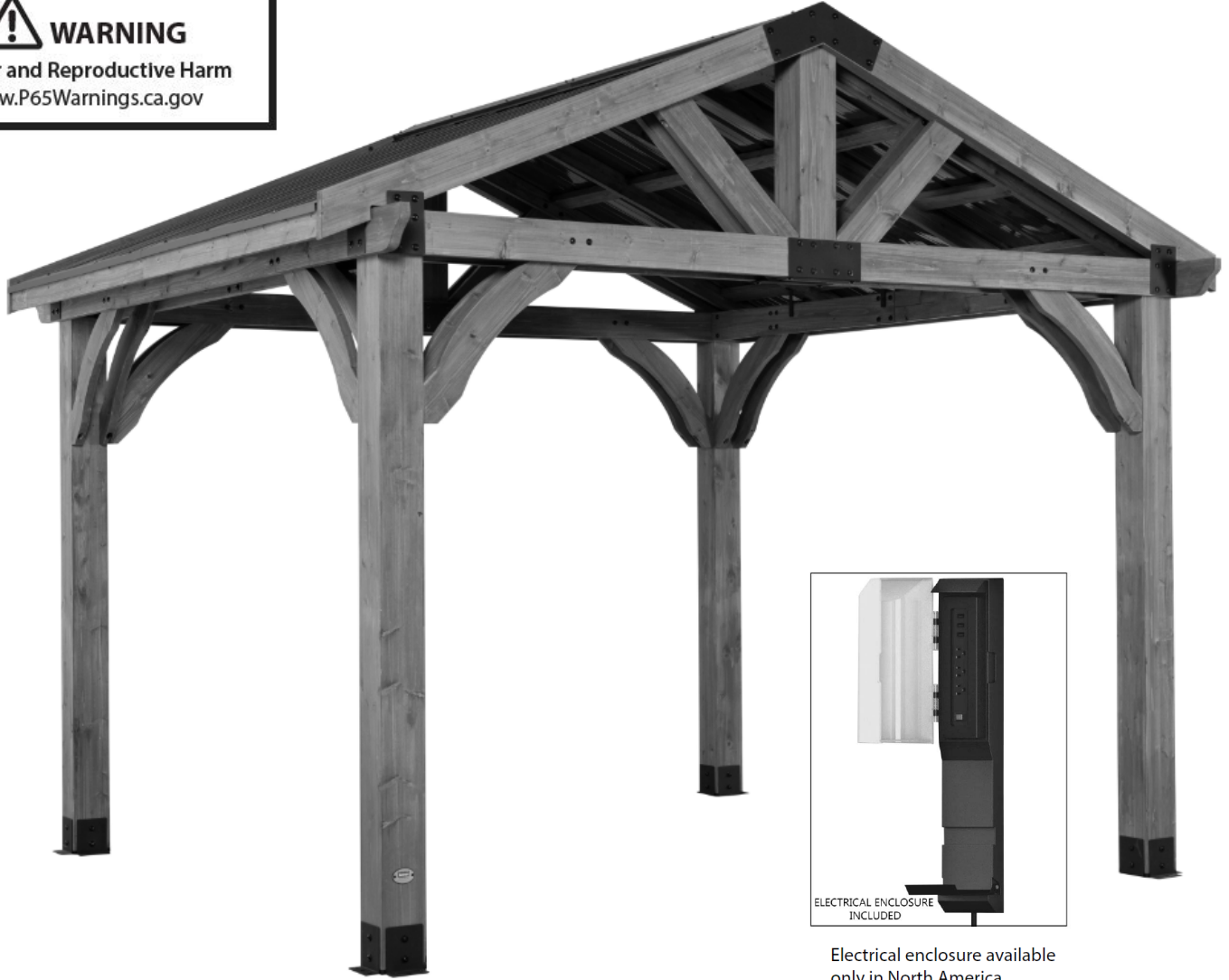
Manufactured by:  
 Backyard Discovery  
 3305 Airport Drive, Pittsburg, KS 66762  
 800-856-4445

Basepoint Business Centre: Rivermead Drive, Westlea, Swindon SN5 7EX Phone: 0800-118-2476  
 J.P. Coenstraat 7, The Bridge, The Hague, 2595 WP, Netherlands Phone: 08005678990

# 12x10 Brookdale Gazebo

MODEL # : 2006522B

 **WARNING**  
 Cancer and Reproductive Harm  
[www.P65Warnings.ca.gov](http://www.P65Warnings.ca.gov)



Electrical enclosure available only in North America

Please visit [www.backyarddiscovery.com](http://www.backyarddiscovery.com)  
 For the most up to date assembly manual, to register your product, or to order replacement parts *Para obtener instrucciones en español, visite* [www.backyarddiscovery.com](http://www.backyarddiscovery.com)



EASY STEP-BY-STEP  
 3D INTERACTIVE INSTRUCTIONS  
 DOWNLOAD THE FREE APP  
 



**INSTALLATION SERVICES AVAILABLE!**  
 See inside for details

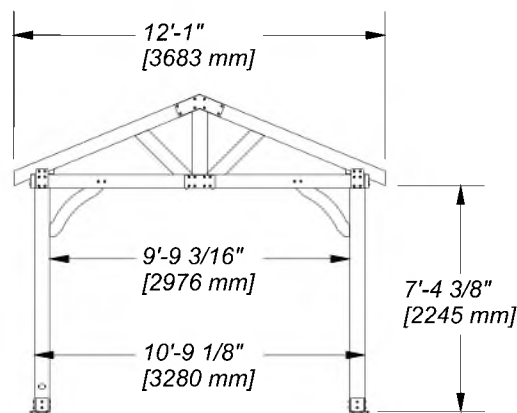
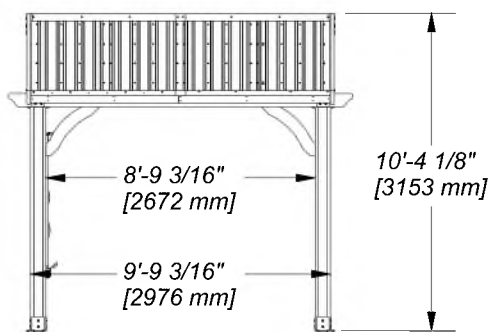
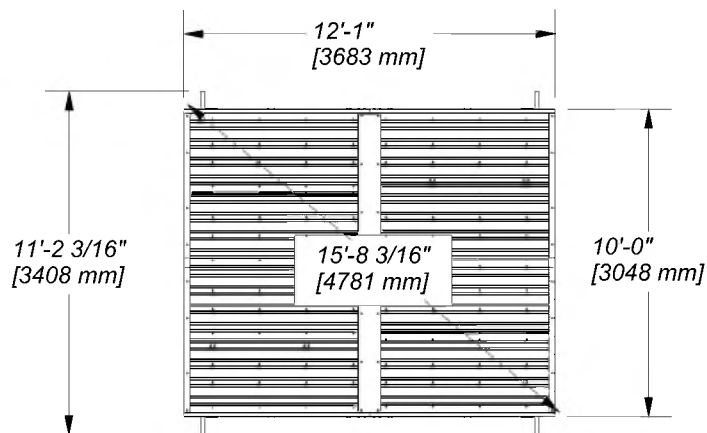


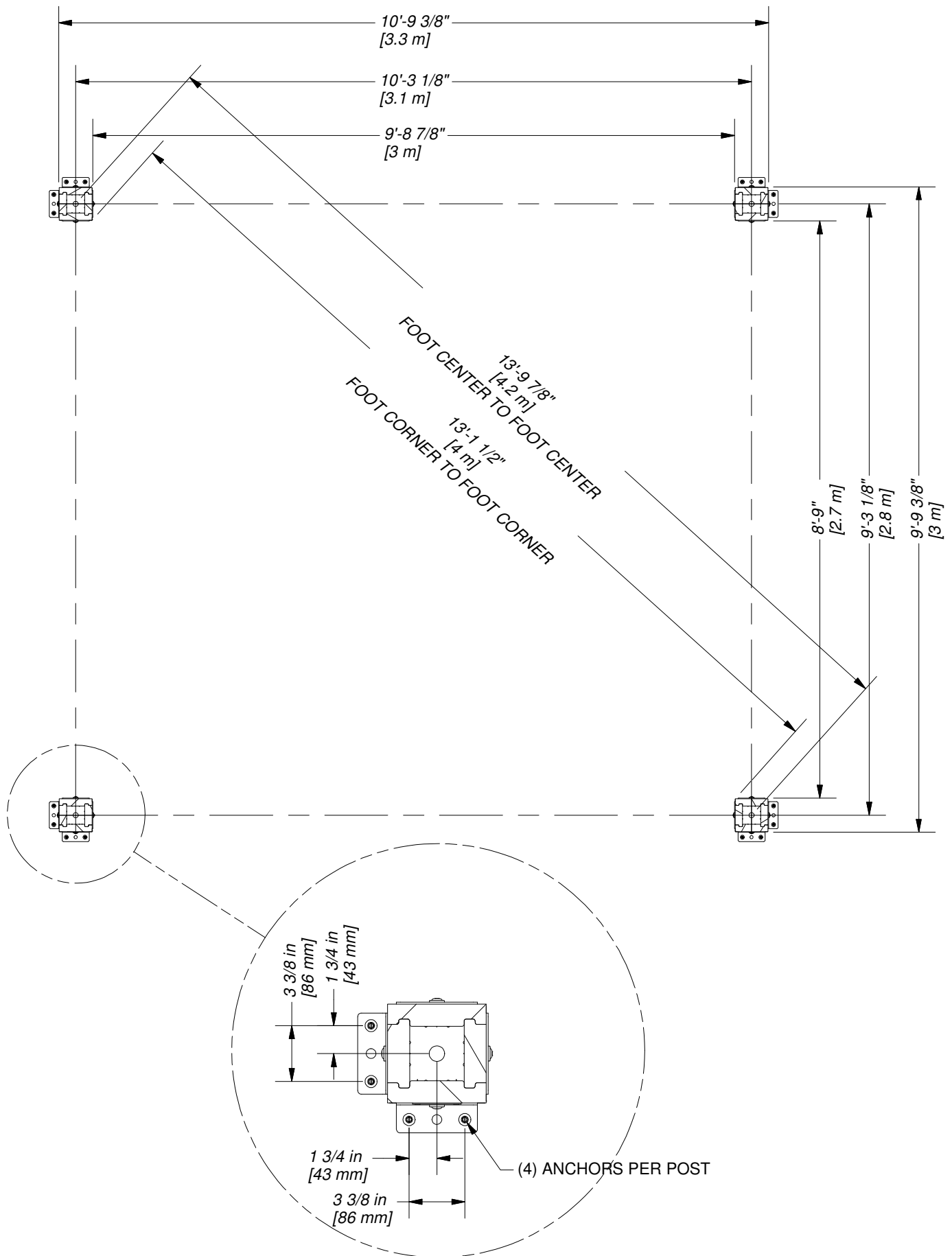
**It is critically important that you start with square and level footings, concrete pad or deck to attach your structure**

- Pay close attention to the items needed for each step. Make sure you are using the correct hardware for each step. Using incorrect hardware may result in improper assembly
- Remember to double check for underground utilities and overhead electrical lines

**Post mounts are provided with your structure which allows you to permanently install your structure to a pre-existing or new wood or concrete surface. See Anchor Instructions for further details and recommendations.**

- The hardware to attach the post mounts to the structure is included.
- The hardware to mount the structure permanently to a concrete surface is included.
- The hardware to mount the structure permanently to a wood deck is NOT included and will need to be purchased separately. You must ensure there is ample structural support under the deck before permanently attaching.



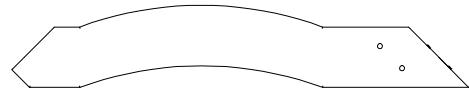




## Wood Components (Not to Scale)



**AB1** | ANGLE BRACE - W2A02967  
(8) | 1 5/16"x6 7/16"x35 3/4" (34x163x908)



**AB3** | ANGLE BRACE - W2A03470  
(1) | 1 5/16"x6 7/16"x35 3/4" (34x163x908)



**AB2** | ANGLE BRACE - W2A02968  
(7) | 1 5/16"x6 7/16"x35 3/4" (34x163x908)



**D1** | BEAM - W4L13079  
(2) | 1 3/8"x5 1/4"x111 1/8" (36x134x2824)



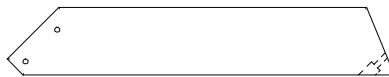
**D2** | BEAM - W4L13080  
(8) | 1 3/8"x5 1/4"x64 5/8" (36x134x1640)



**D3** | BEAM - W4L13072  
(4) | 1 3/8"x5 1/4"x11 1/2" (36x134x292)



**D4** | BEAM - W4L13075  
(2) | 1 3/8"x5 1/4"x102 3/8" (36x134x2600)



**D6** | ANGLE BRACE - W4L13071  
(4) | 1 3/8"x5 1/4"x30 1/4" (36x134x769)



**D7** | ANGLE BRACE - W4L13082  
(4) | 1 3/8"x5 1/4"x32 3/8" (36x134x823)



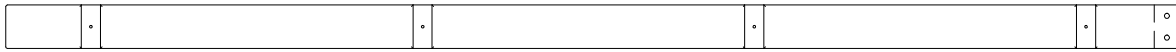
**E1** | OUTSIDE RAFTER - W4L13076  
(4) | 1 3/8"x3 3/8"x77 3/8" (36x86x1965)



**E2** | RAFTER - W4L13073  
(6) | 1 3/8"x3 3/8"x77 3/8" (36x86x1965)



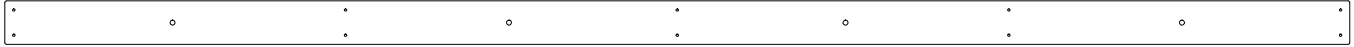
## Wood Components (Not to Scale)



**E3 | SHEATHING BOARD - W4L13074**  
(8) | 1 3/8"x3 3/8"x91 3/4" (36x86x2330)



**E4 | SHEATHING BOARD - W4L13081**  
(8) | 1 3/8"x3 3/8"x27 1/4" (36x86x692)



**H1 | RAFTER - W4L13077**  
(2) | 1"x3 3/8"x105 1/8" (24x86x2670)



**H2 | FASCIA - W4L13078**  
(4) | 1"x3 3/8"x59 3/8" (24x86x1507)



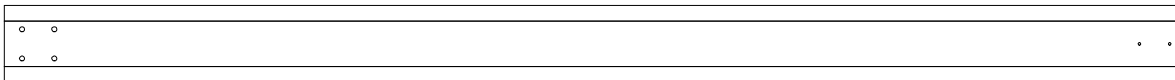
**J9 | RIDGE CAP STIFFENER - W4L13590**  
(2) | 1"x2 3/8"x47 5/8" (24x60x1210)



**J10 | RIDGE CAP STIFFENER - W4L13591**  
(2) | 1"x2 3/8"x69 1/4" (24x60x1760)



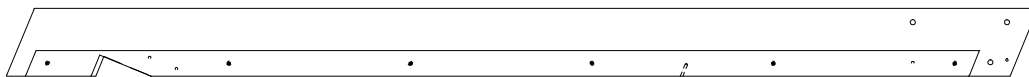
**P1 | POST - W2A02963**  
(2) | 6"x6"x92 1/16" (152x152x2338)



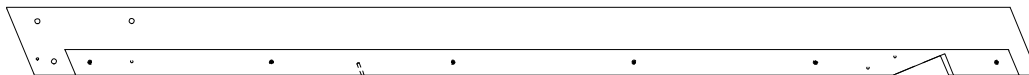
**P2 | POST - W2A02964**  
(2) | 6"x6"x92 1/16" (152x152x2338)



**P3 | POST - W2A02965**  
(2) | 7"x7"x32 1/2" (152x152x845)



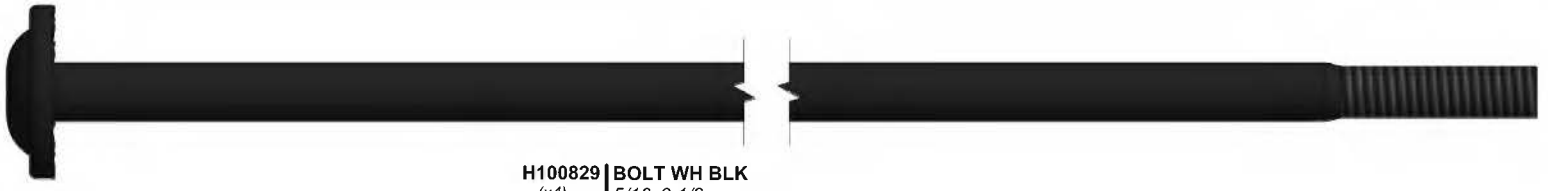
**RP1 | END RAFTER - W2A02962**  
(2) | 2 13/16"x5 1/4"x80 5/8" (72x134x2048)



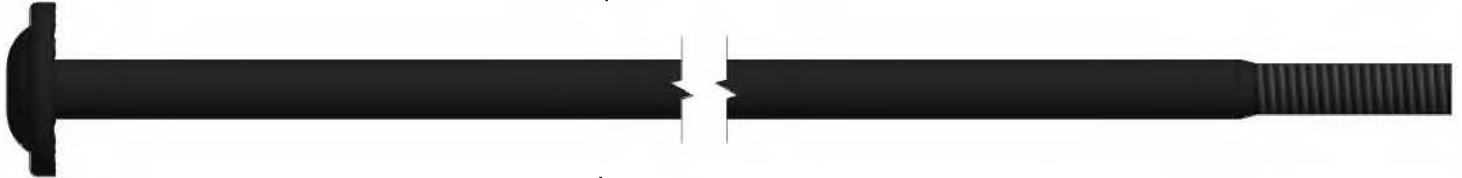
**RP2 | END RAFTER - W2A02966**  
(2) | 2 13/16"x5"x80 5/8" (72x134x2048)



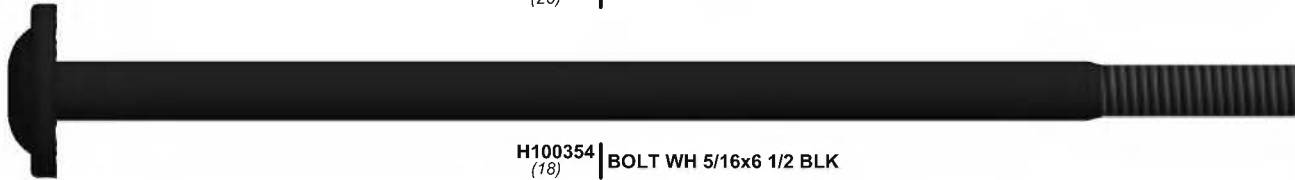
Hardware Components



H100829 | BOLT WH BLK  
(x4) | 5/16x9 1/2



H100765 | BOLT WH 5/16x8 BLK  
(26)



H100354 | BOLT WH 5/16x6 1/2 BLK  
(18)



H100194 | BOLT WH BLK  
(x18) | 5/16x2 1/2



H100193 | NUT BARREL WH BLK  
(x42) | 5/16x1-1/2



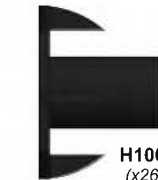
H100205 | BOLT WH BLK  
(x42) | 5/16x2-1/4



H100192 | NUT BARREL WH BLK  
(x70) | 5/16x7/8



H100407 | BOLT WH BLK  
(x13) | 5/16x1 1/2



H100379 | T-NUT BLK  
(x26) | 5/16



H100459 | BOLT WH BLK  
(x18) | 5/16x1 1/4



H100206 | LAG SCREW WH 5/16x3 BLK  
(22)



H100468 | BOLT WH BLK  
(x9) | 5/16x1



H100471 | LAG SCREW WH BLK  
(x54) | 5/16x1 1/2



## Hardware Components



**H100201 | SCREW PFH BLK**  
(x4) | 8x2-1/2



**H100391 | SCREW PFH BLK**  
(x78) | 8x2



**H100200 | SCREW PFH BLK**  
(x30) | 8x1 1/2



**H100536 | SCREW PWH BLK**  
(x33) | 8x1 1/4



**H100392 | SCREW PWH BLK**  
(x17) | 8x3/4



**H100120 | SCREW CONCRETE ANCHOR**  
(x18) | 1/4x2



**H100760 | SCREW WOODGRIP**  
(x132) | 10x1 1/4



**H100759 | SCREW TAPPING**  
(x17) | 1/4x3/4



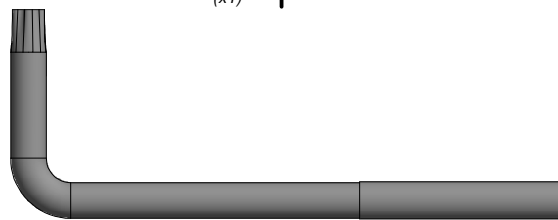
**H100833 | SCREW WOODGRIP**  
(x17) | 10x3/4



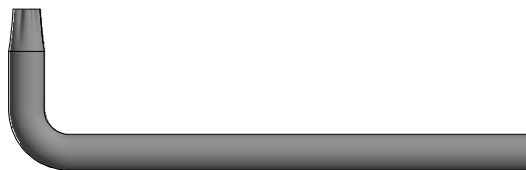
**H100764 | SCREW SETTER**  
(x1)



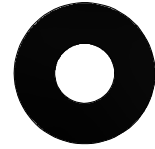
**H101100 | MAGNETIC DRIVER**  
(x1)



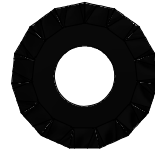
**A100041 | TORX WRENCH**  
(x1) | T-40



**H100114 | TORX WRENCH**  
(x1) | T-30



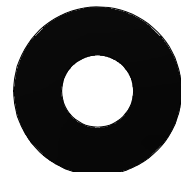
**H100630 | WASHER FLAT BLK**  
(x17) | 8x19



**H100198 | WASHER LOCK EXT BLK**  
(x92) | 8x19



**H100199 | WASHER LOCK EXT BLK**  
(x88) | 12x19



**H100770 | WASHER FLAT BLK**  
(x4) | 5/16



**H100479 | NUT LOCK BLK**  
(x4) | 5/16



**A100042 | TORX BIT**  
(x1) | T-40



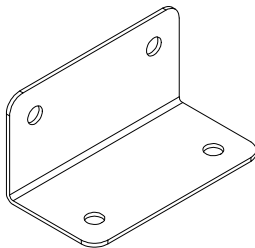
**H100147 | TORX BIT**  
(x1) | T-30



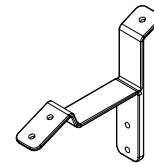
## Accessory Components (Not to Scale)



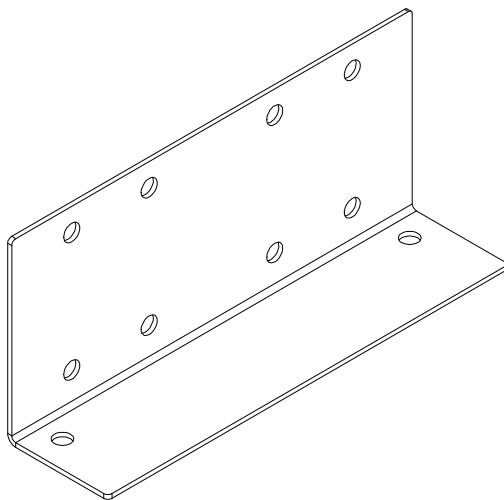
**A100241** | BYD ID TAG (SMALL) WITHOUT AGES  
(x1)



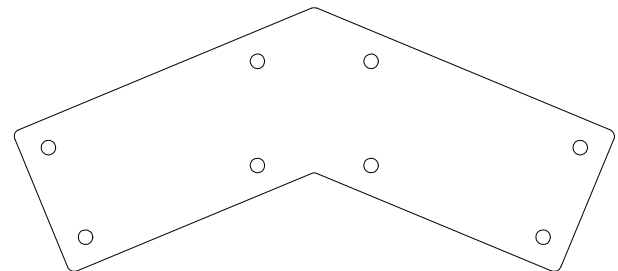
**A4M00619** | L BRACKET 66x66x127 - BLK  
(x4)



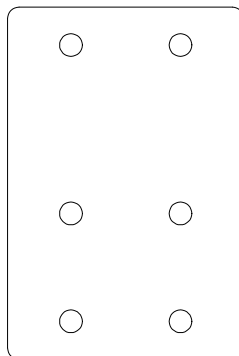
**A4M00961** | ROOF BRACKET  
(x6)



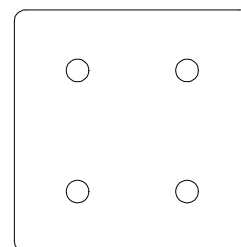
**A4M00972** | BRACKET  
(x4)



**A4M00973** | BRACKET  
(x2)



**A4M00974** | BRACKET  
(x4)

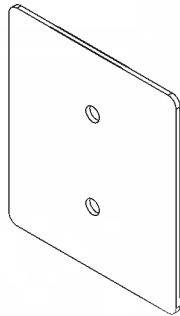


**A4M00979** | BRACKET  
(x4)

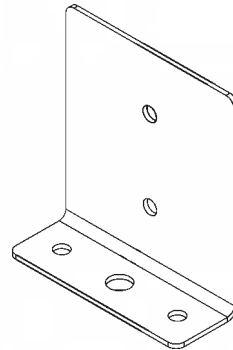




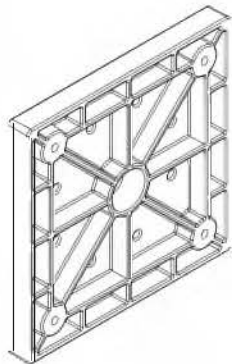
Accessory Components (Not to Scale)



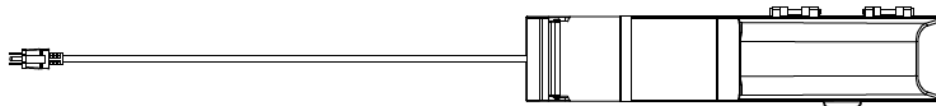
A4M00978 | POST PLATE  
(x8)



A4M00977 | POST ANCHORING PLATE  
(x8)



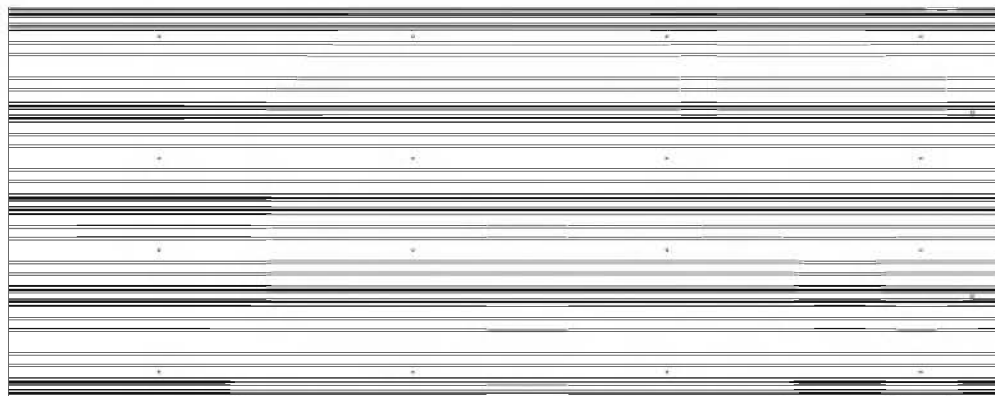
A6P00308 | 6x6 POST FOOT  
(x4)



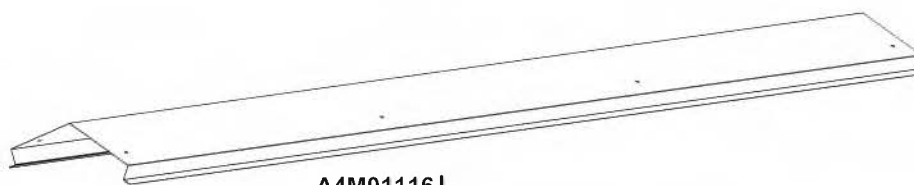
9205413 | ELECTRICAL ENCLOSURE  
(x1)



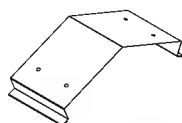
Accessory Components (Not to Scale)



A4M01124  
(x8) | 29 GA STEEL SHEETING



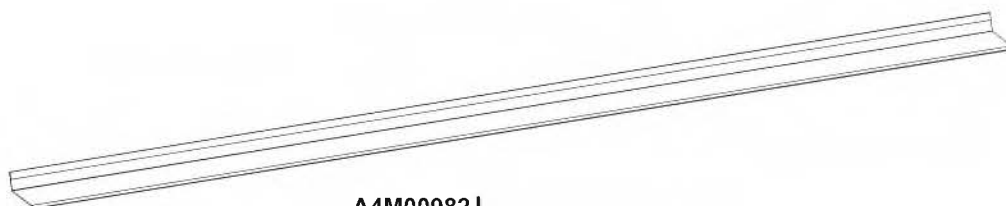
A4M01116  
(x2) | RIDGE CAP 29 GA



A4M01127  
(x1) | RIDGE CAP SPLICE



A6P00398  
(x2) | RIDGE CAP PROTECTOR



A4M00982  
(x4) | ROOF EDGE TRIM



A4M00983  
(x2) | ROOF EDGE TRIM SPLICE

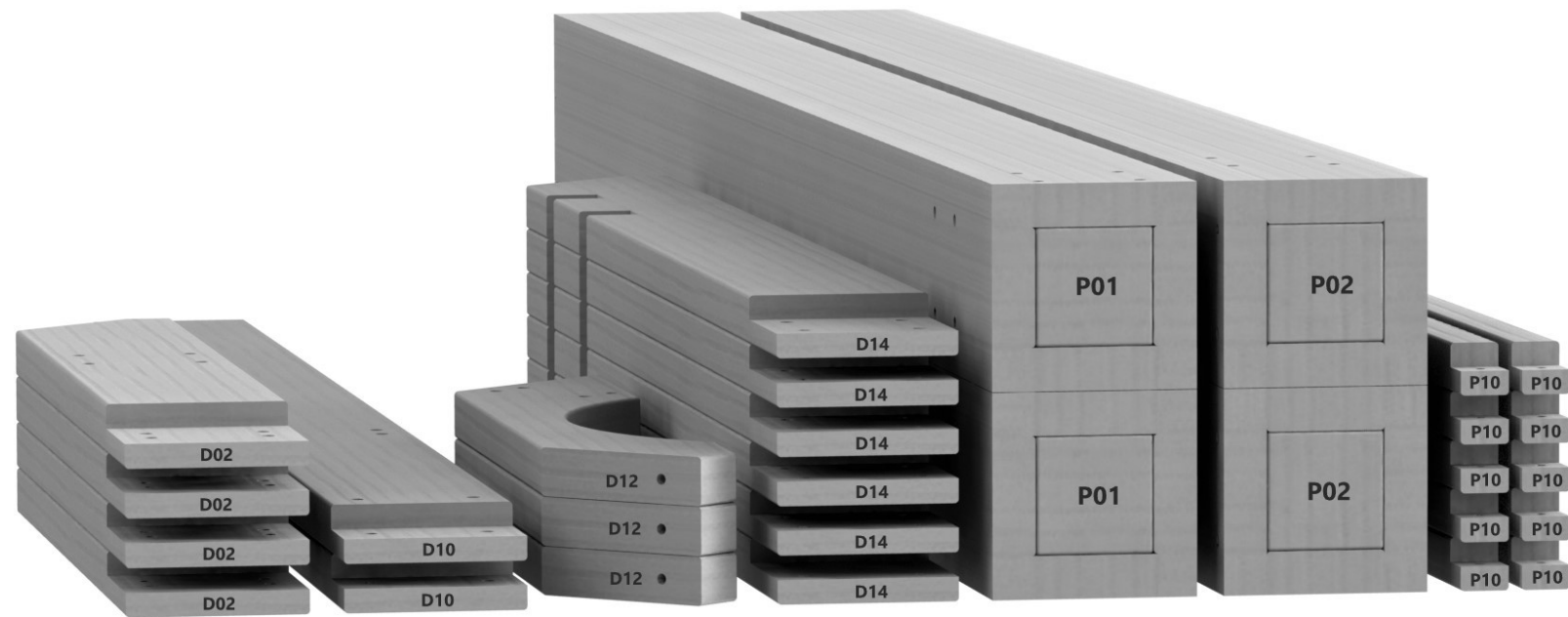


It is critical for ease of assembly that you take the time to sort and organize the wood and hardware.

## WOOD PARTS:

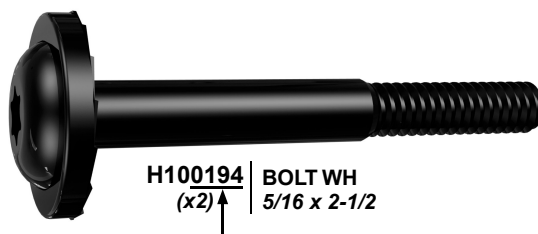
- Organize wood parts by the three-digit, alpha-numeric number stamped on each board (ex. P01).
- If there are multiple boards with the same stamped number, stack those pieces together.
- Stamps can be found on the flat surface of the boards or on the end of the boards.
- Allow yourself plenty of room - the wood pieces can take up a significant amount of space.

**NOTE: CARTONS ARE NOT ORGANIZED BY BOARD NUMBER.**



## HARDWARE PARTS:

- We recommend that you have a separate table to organize the hardware.
- Hardware bags are printed with a seven-digit, alpha-numeric part number.
- You can organize your hardware by part number or group by hardware type (i.e. bolts, nuts, etc.).
- During assembly you only need to reference the last four digits of the number.





# PRE-ASSEMBLY

# STEP 2 - Tools Required



Cordless Drill or Electric Drill



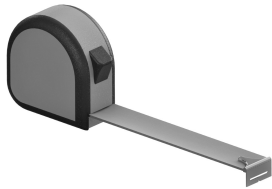
Drill Attachments:  
Phillips Head



1/8", 3/16", 3/8" & 7/16" Drill Bits



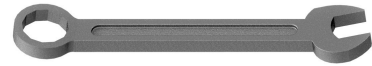
Phillips Screw Driver



Tape Measure



Claw Hammer



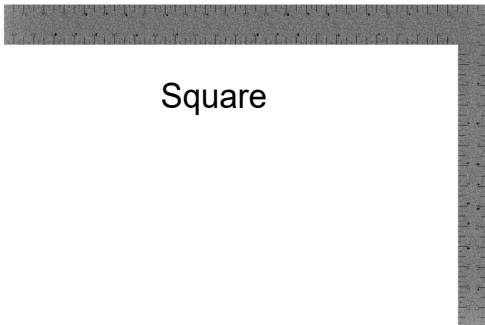
Open End Wrenches 1/2" & 7/16"



3/8" Drive Ratchet, 1/2" & 7/16" STD Sockets, 1/2" & 7/16" Deep Sockets



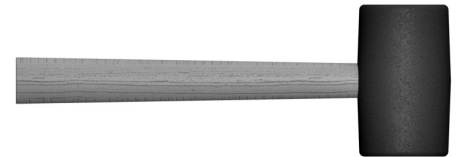
3/8 & 5/16" Nut Drivers



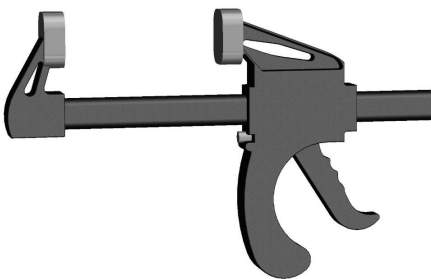
Square



Level 24"



Rubber Mallet - Optional



A6P00460 | QUICK RELEASE BAR CLAMP  
(2)



There are several types of assembly instructions available to you.

1. Printed Assembly Manual included with your set
2. BILT APP - 3D interactive instructions
3. Combination of the Printed Manual and BILT APP (Note: Step numbers can differ between the two methods)

**BILT®**

**Scan for easy 3D instructions**

Download the BILT app before you begin

Download on the App Store

GET IT ON Google Play

Partners Needed

17



# Phase 1

# STEP 1



**P1 | POST - W2A02963**  
(2) | 6"x6"x92 1/16" (152x152x2338)



**P2 | POST - W2A020610**  
(2) | 6"x6"x92 1/16" (152x152x2338)



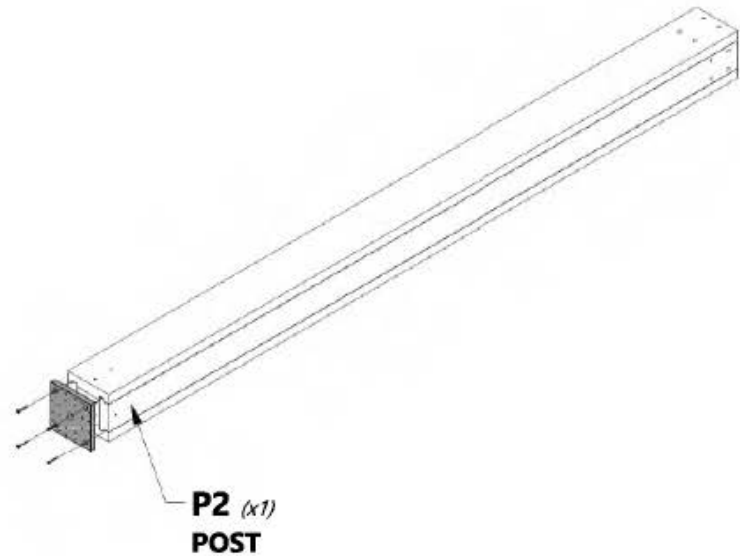
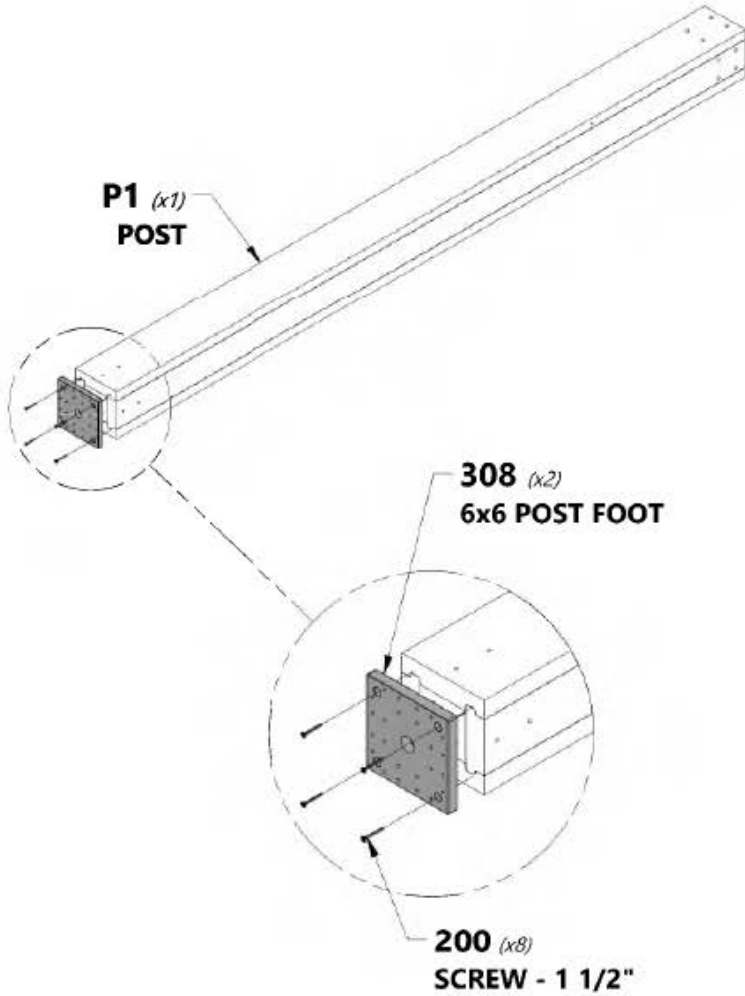
**A6P00308 | 6x6 POST FOOT**  
(x4)



**H100200 | SCREW PFH BLK**  
(x16) | 8x1 1/2

## COMPLETE THIS STEP TWICE

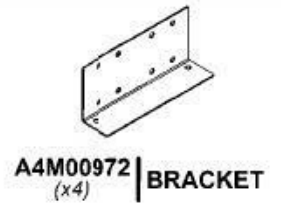
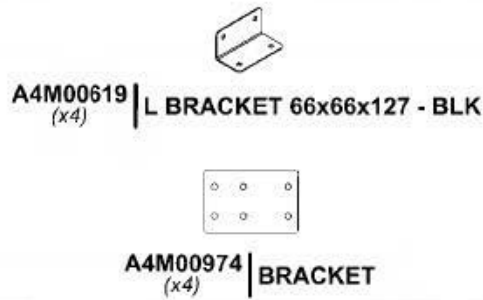
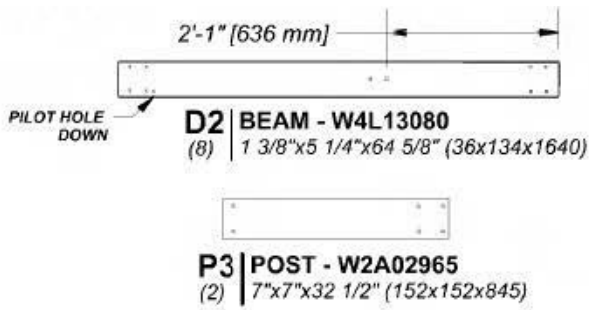
FOR EASE OF ASSEMBLY WE RECOMMEND USING SAW HORSES FOR STEPS 1 THROUGH 3.



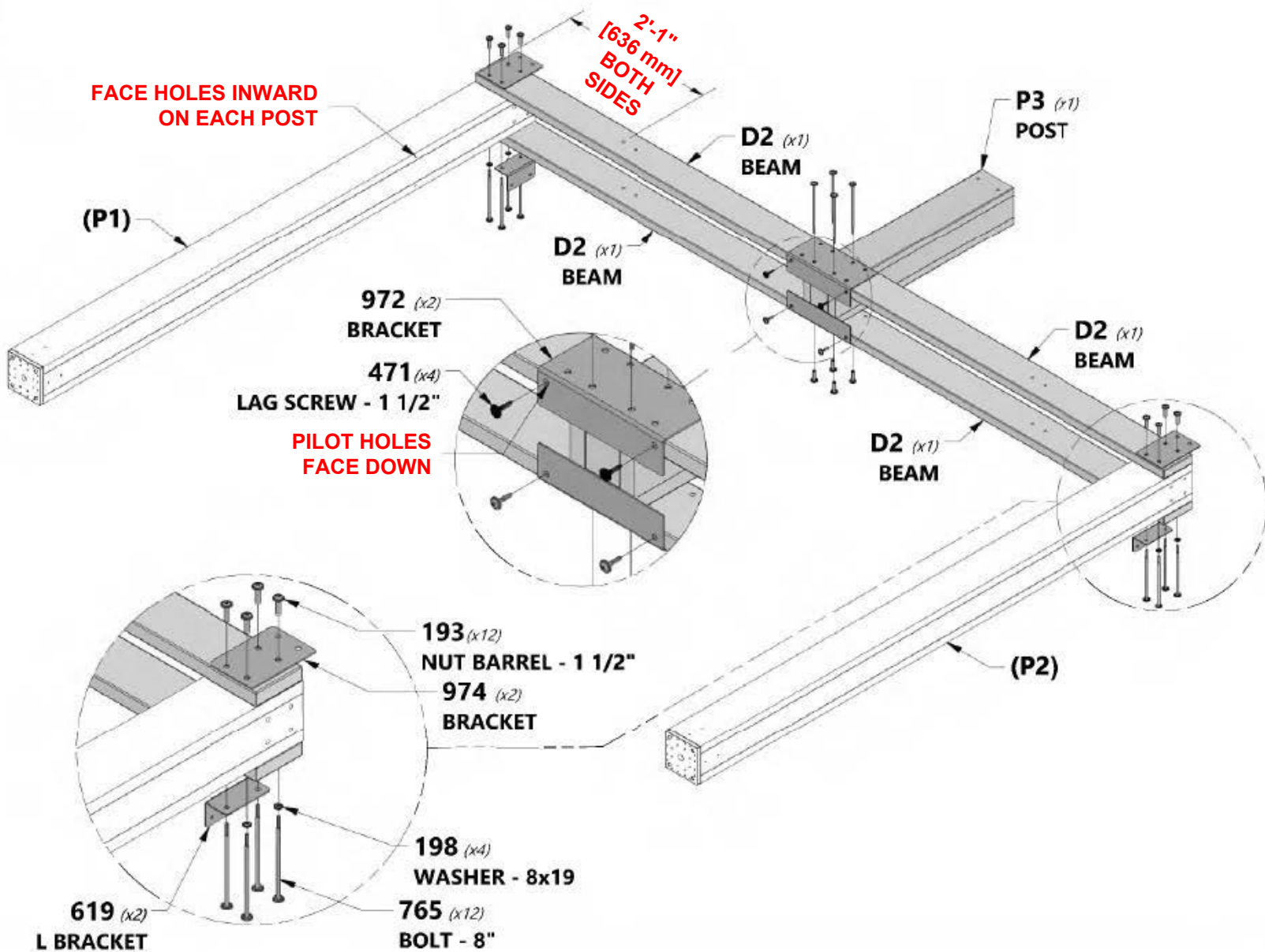


# Phase 1

# STEP 2



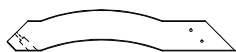
### COMPLETE THIS STEP TWICE





# Phase 1

# STEP 3



**AB2 | ANGLE BRACE - W2A02968**  
(7) | 1 5/16"x6 7/16"x35 3/4" (34x163x908)



**AB3 | ANGLE BRACE - W2A03470**  
(1) | 1 5/16"x6 7/16"x35 3/4" (34x163x908)



**H100206 | LAG SCREW WH BLK**  
(8) | 5/16x3



**H100205 | BOLT WH BLK**  
(16) | 5/16x2-1/4



**H100192 | NUT BARREL WH BLK**  
(16) | 5/16x7/8

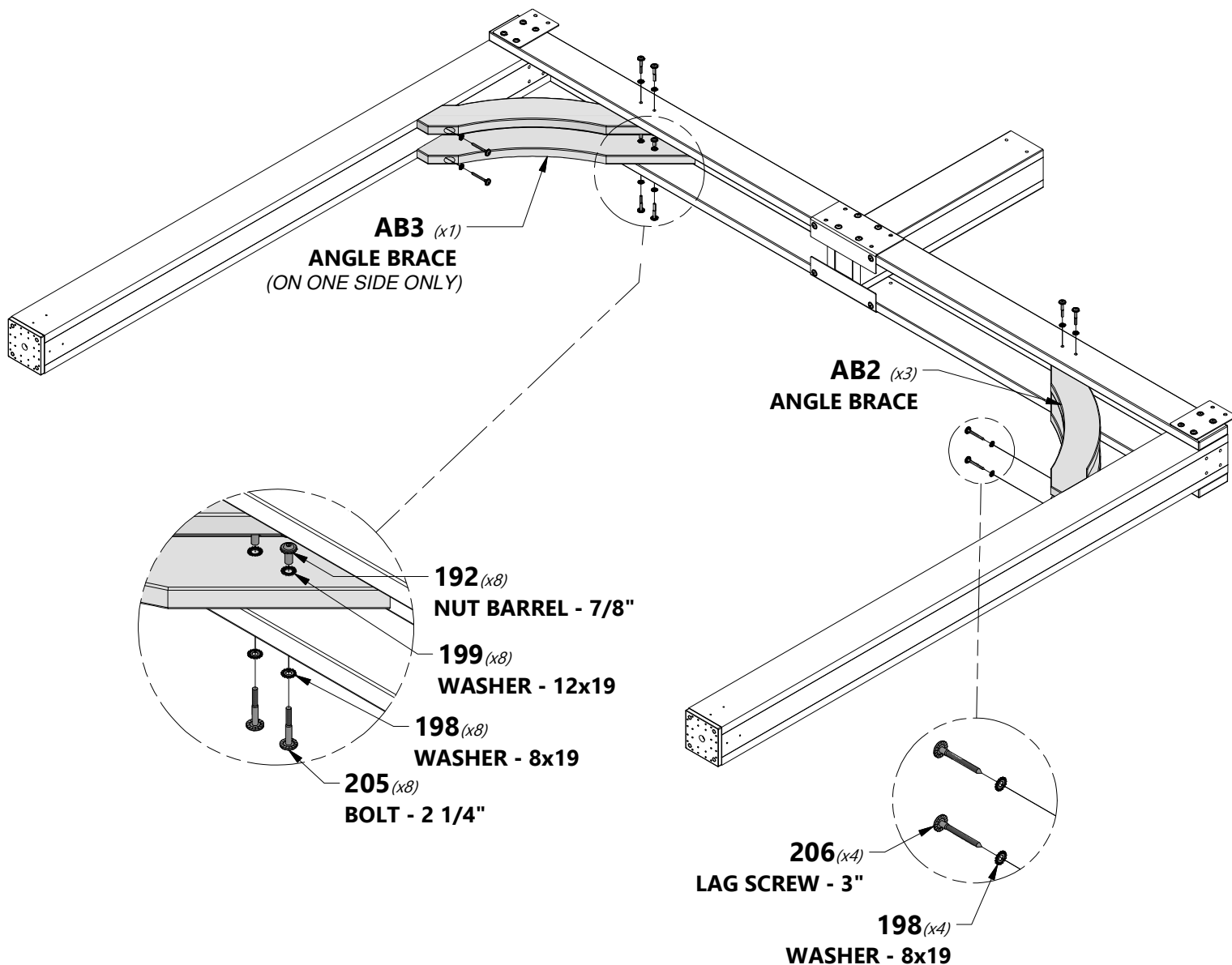


**H100199 | WASHER LOCK EXT BLK**  
(16) | 12x19



**H100198 | WASHER LOCK EXT BLK**  
(24) | 8x19

**COMPLETE THIS STEP TWICE**  
**(USE (4) AB2 ANGLE BRACES FOR OTHER SIDE)**







# Phase 1

# STEP 4



**D4** | BEAM - W4L13075  
(2) | 1 3/8"x5 1/4"x102 3/8" (36x134x2600)



**H100468** | BOLT WH BLK  
(x8) | 5/16x1



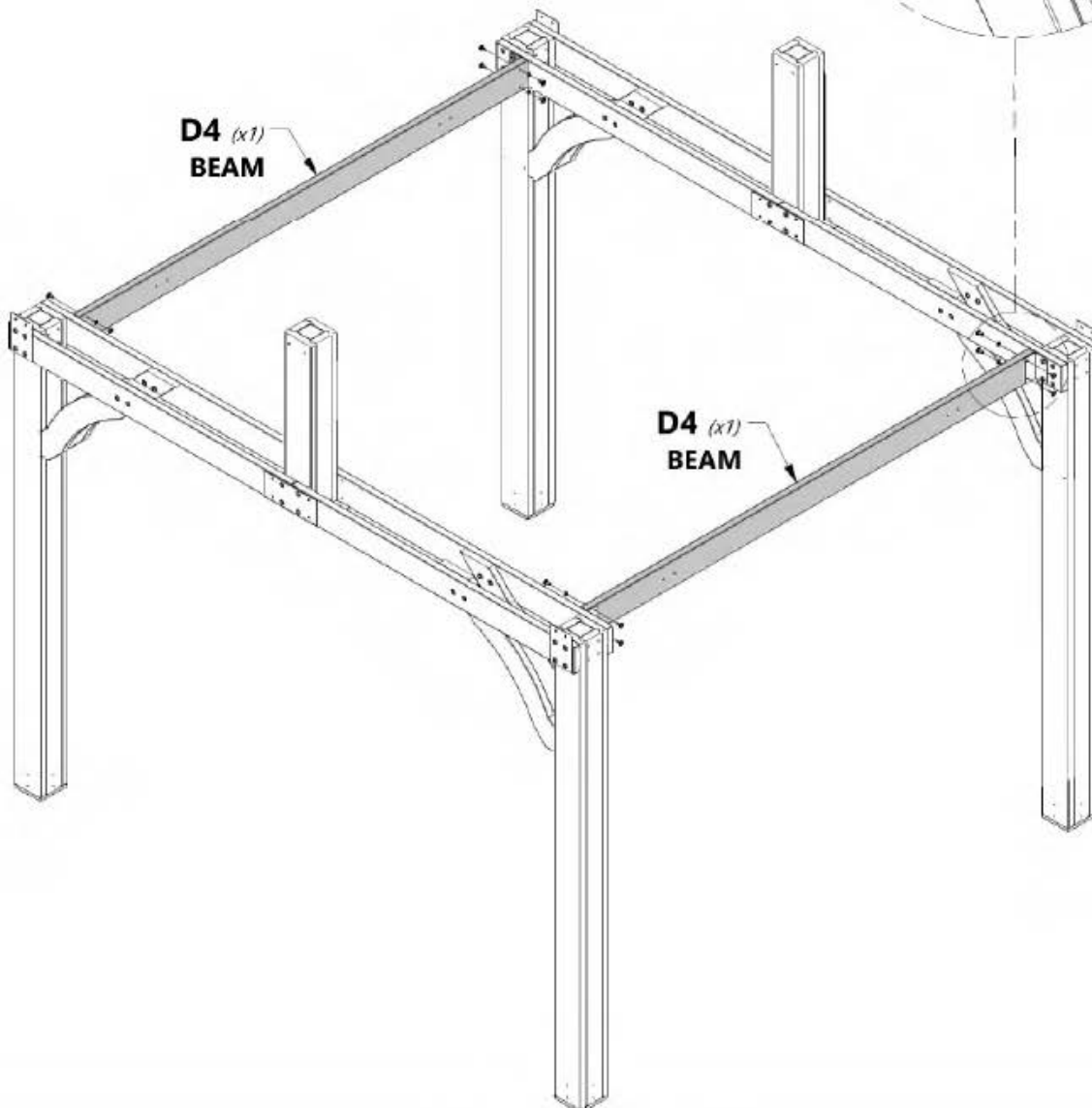
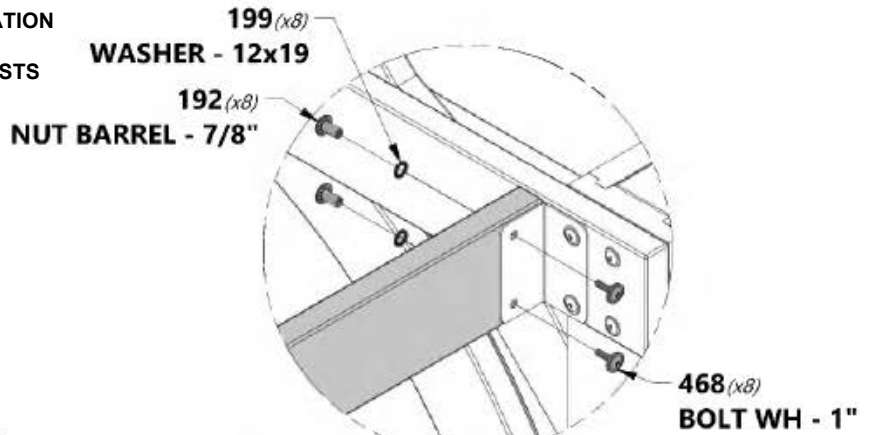
**H100192** | NUT BARREL WH BLK  
(x8) | 5/16x7/8



**H100199** | WASHER LOCK EXT BLK  
(x8) | 12x19

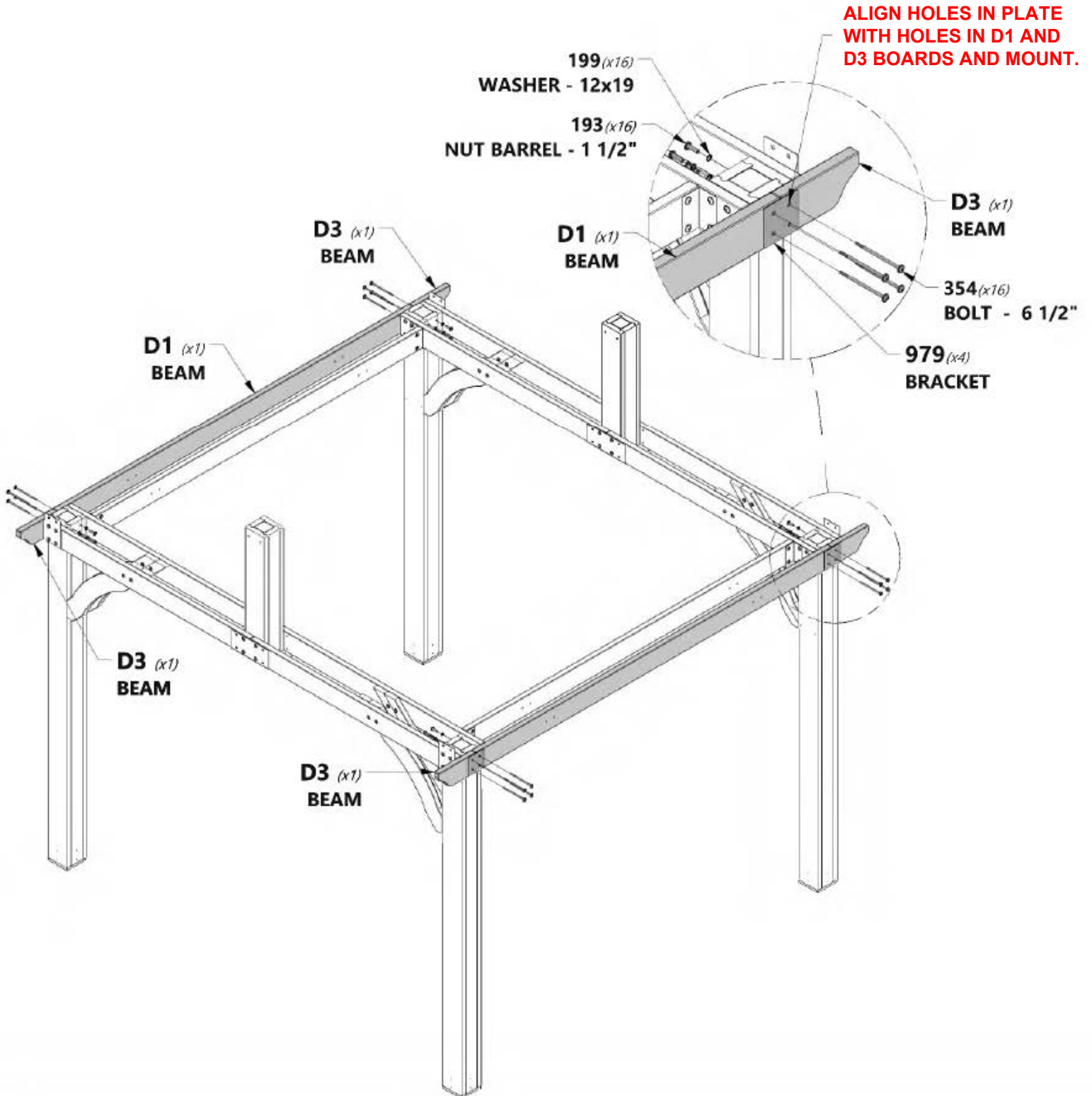
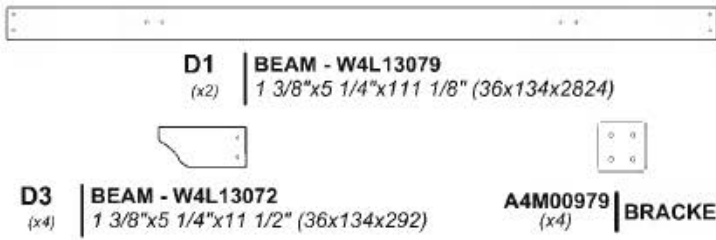
### TIPS:

- THREE PEOPLE ARE HELPFUL FOR THIS STEP.
- MOVE THE 10FT POST ASSEMBLIES TO THEIR FINAL LOCATION WITH SOMEONE HOLDING EACH ASSEMBLY UPRIGHT.
- USING A THIRD PERSON, CONNECT THE BEAM TO THE POSTS TO MAKE THE GAZEBO FRAME.



# Phase 1

# STEP 5





# Phase 1

# STEP 6

**AB1** | ANGLE BRACE - W2A02967  
 (8) | 1 5/16"x6 7/16"x35 3/4" (34x163x908)

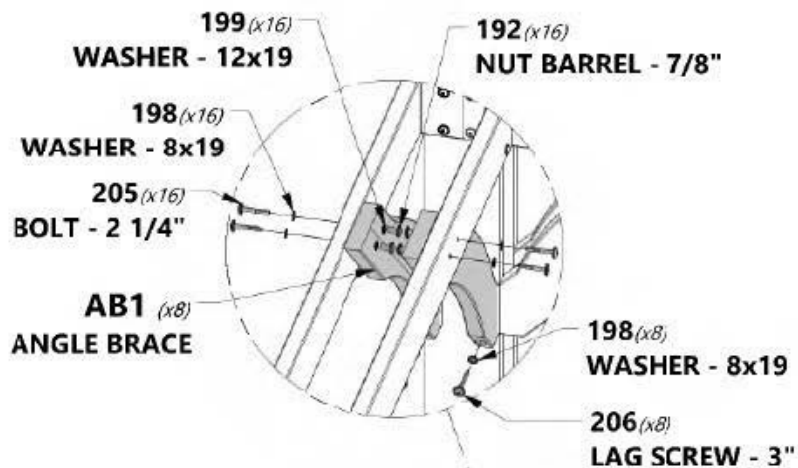
**H100205** | BOLT WH BLK  
 (x16) | 5/16x2-1/4

**H100192** | NUT BARREL WH BLK  
 (x16) | 5/16x7/8

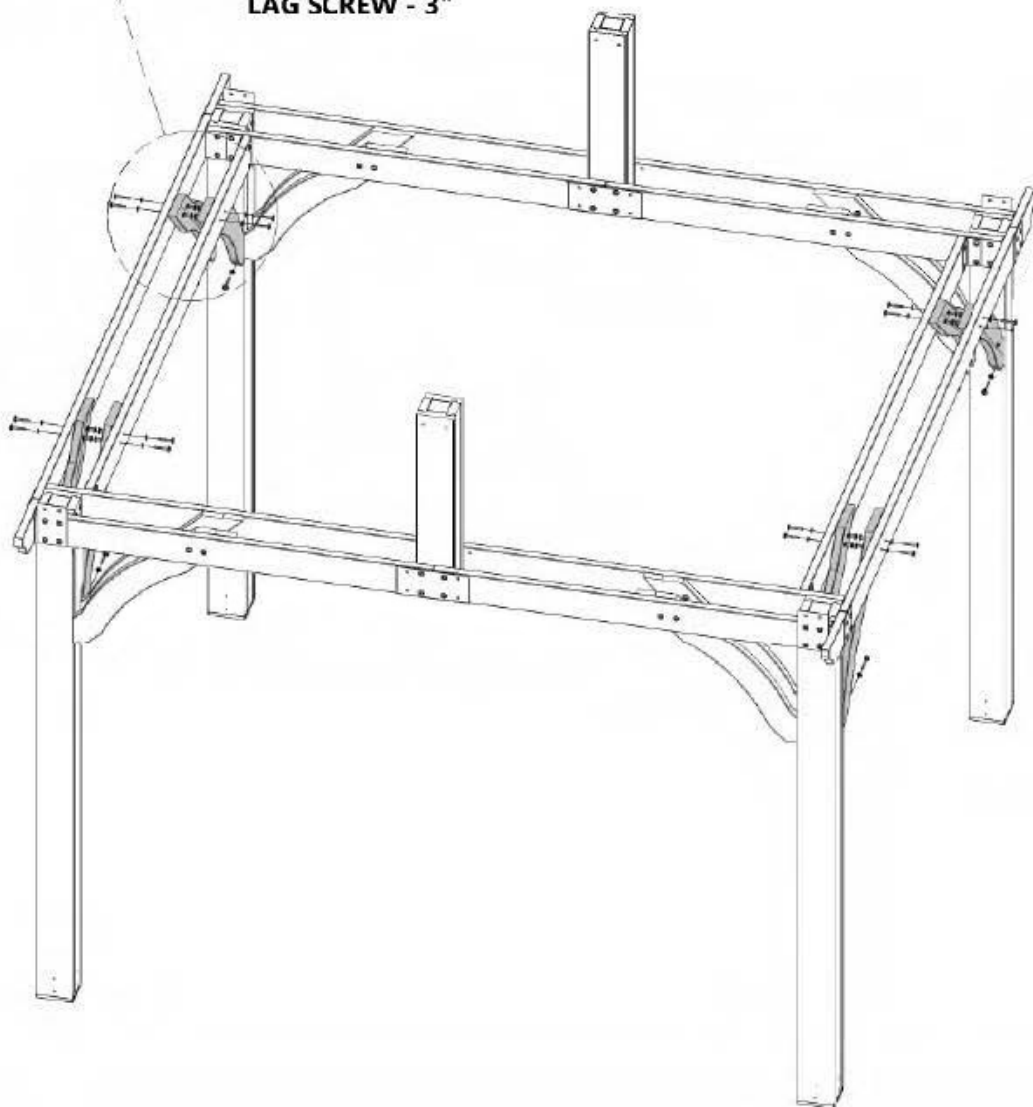
**H100206** | LAG SCREW WH BLK  
 (8) | 5/16x3

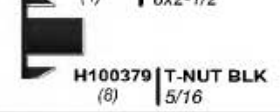
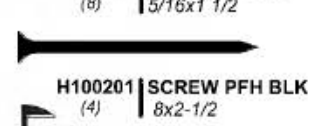
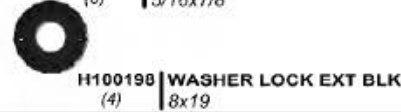
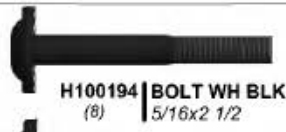
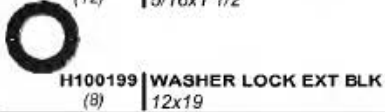
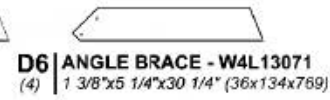
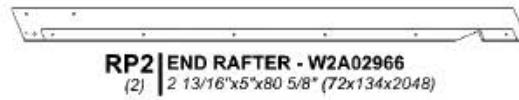
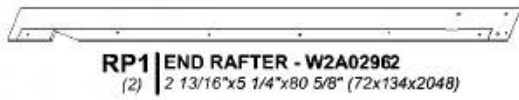
**H100198** | WASHER LOCK EXT BLK  
 (x24) | 8x19

**H100199** | WASHER LOCK EXT BLK  
 (x16) | 12x19



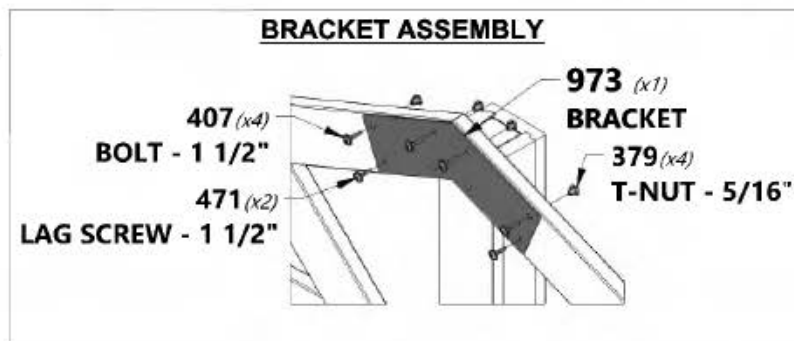
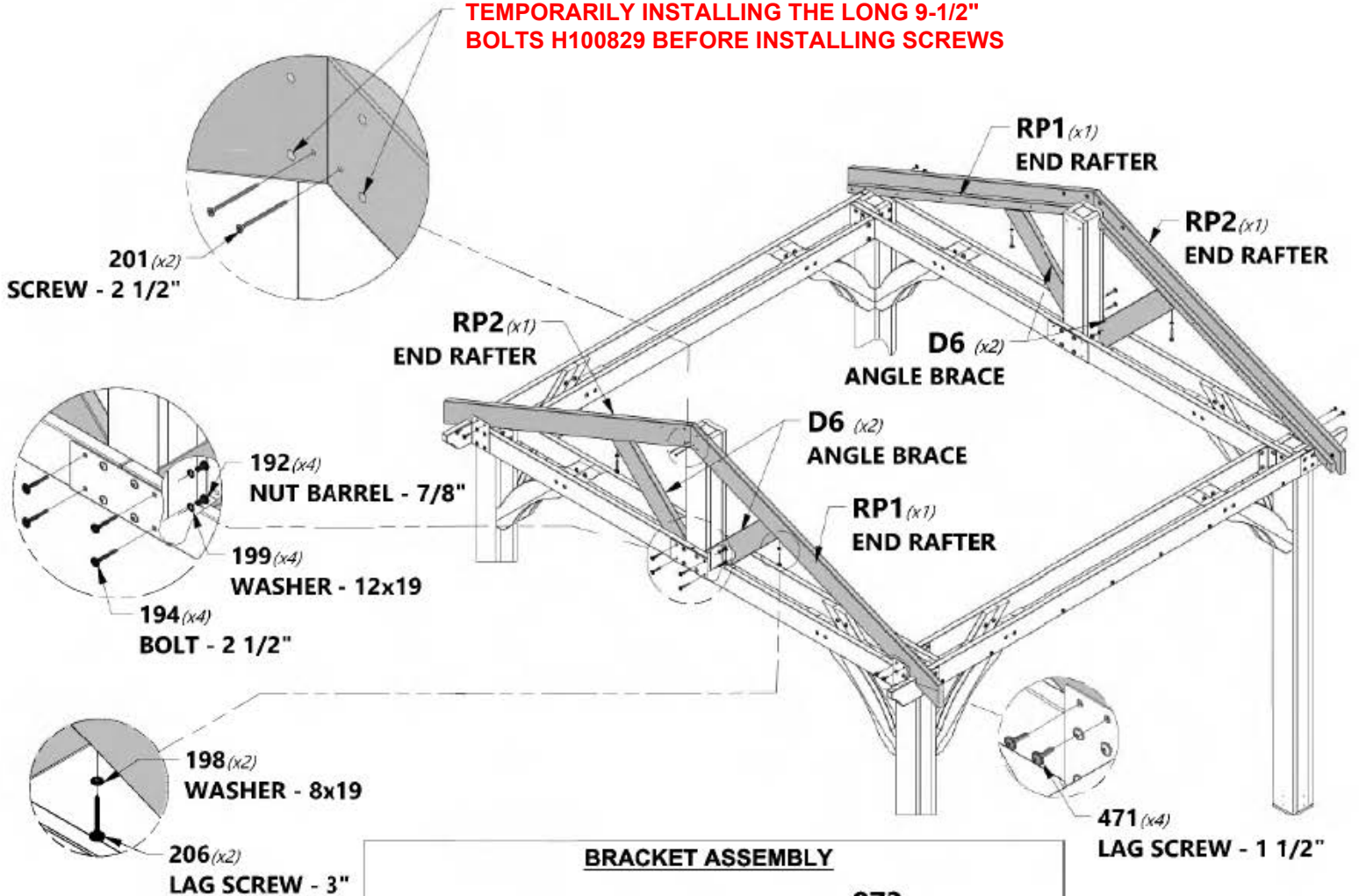
**CRITICAL: SQUARE UNIT BEFORE PROCEEDING TO NEXT STEPS. ONCE SQUARE, TIGHTEN ALL HARDWARE.**





### COMPLETE THIS STEP ON BOTH SIDES

**ALIGN PILOT HOLES WITH POST HOLES BY TEMPORARILY INSTALLING THE LONG 9-1/2" BOLTS H100829 BEFORE INSTALLING SCREWS**





# Phase 1

# STEP 8



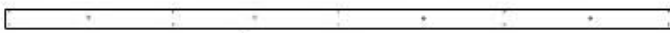
**E1** | OUTSIDE RAFTER - W4L13076  
(4) | 1 3/8"x3 3/8"x77 3/8" (36x86x1965)



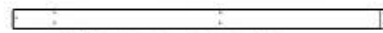
**E2** | RAFTER - W4L13073  
(6) | 1 3/8"x3 3/8"x77 3/8" (36x86x1965)



**H100200** | SCREW PFH BLK  
(10) | 8x1 1/2



**H1** | RAFTER - W4L13077  
(2) | 1"x3 3/8"x105 1/8" (24x86x2670)

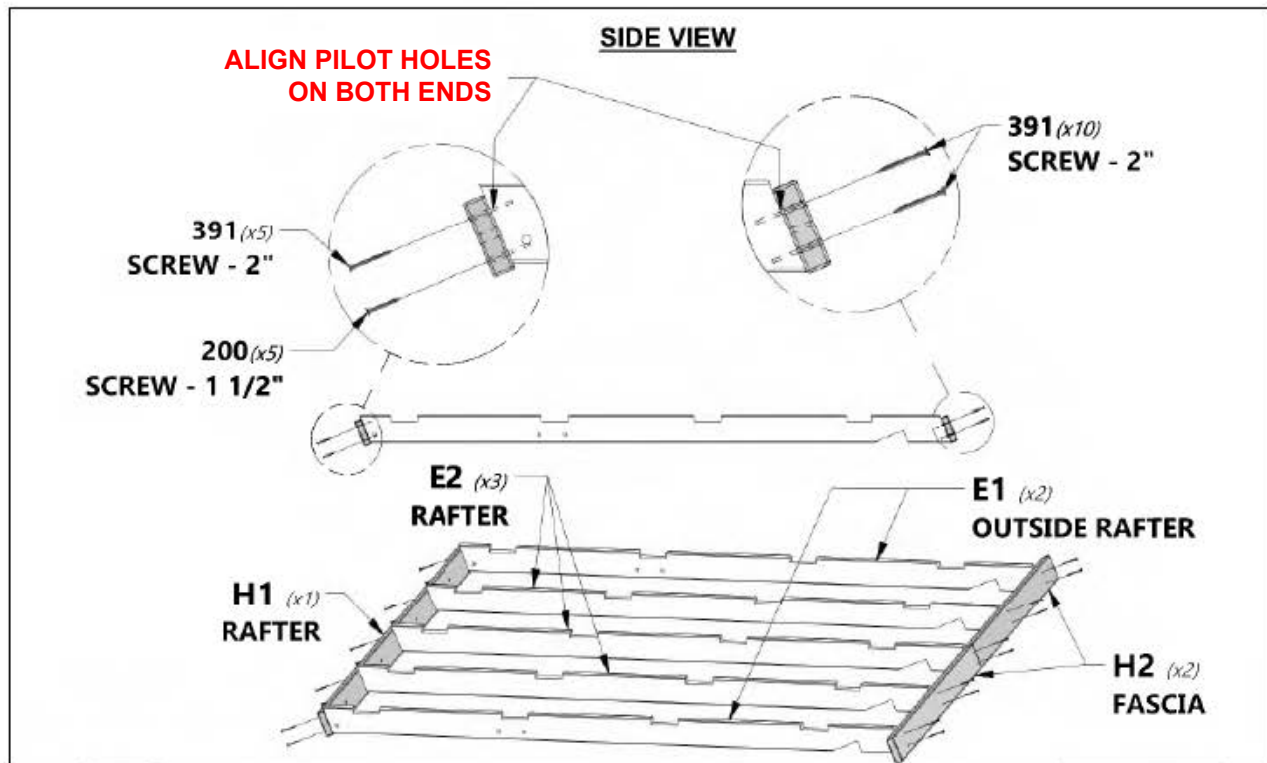
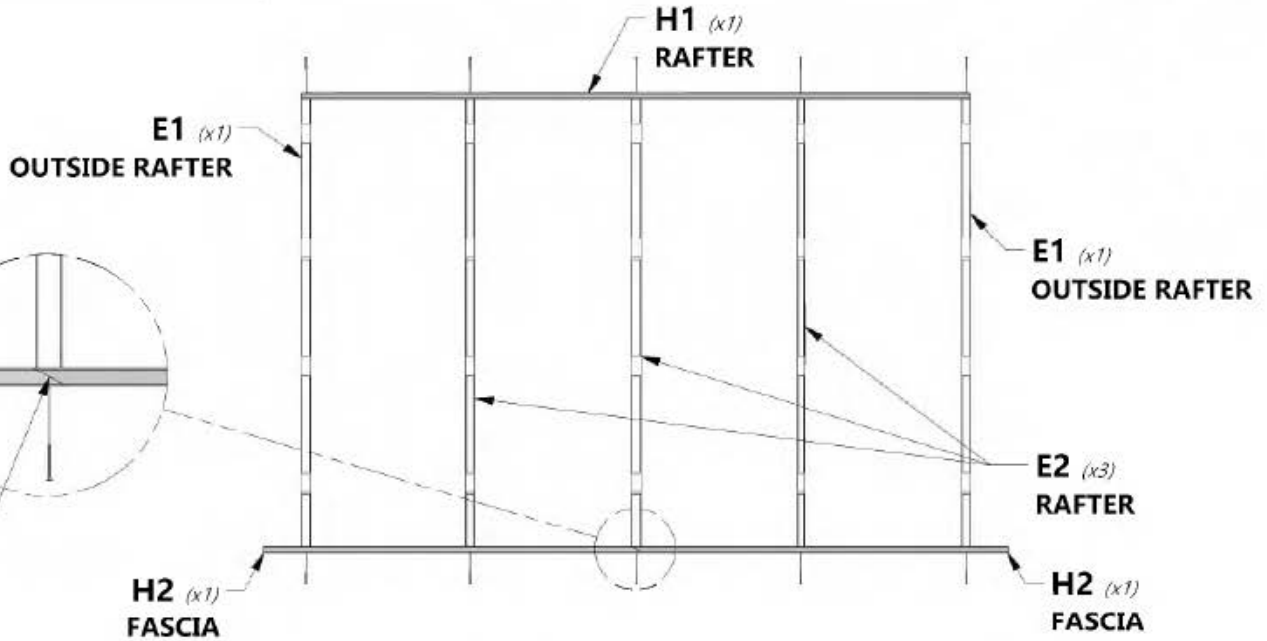


**H2** | FASCIA - W4L13078  
(4) | 1"x3 3/8"x59 3/8" (24x86x1507)



**H100391** | SCREW PFH BLK  
(30) | 8x2

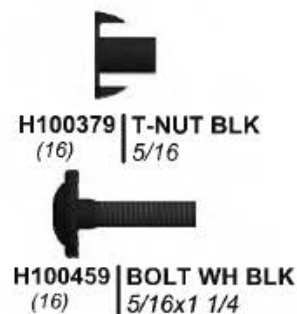
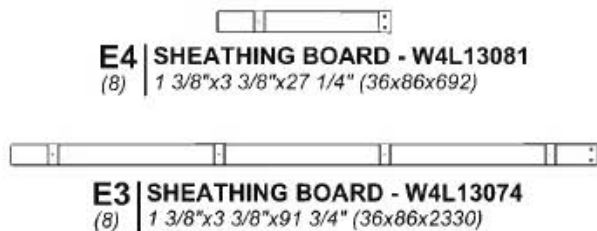
**COMPLETE THIS STEP TWICE**





# Phase 1

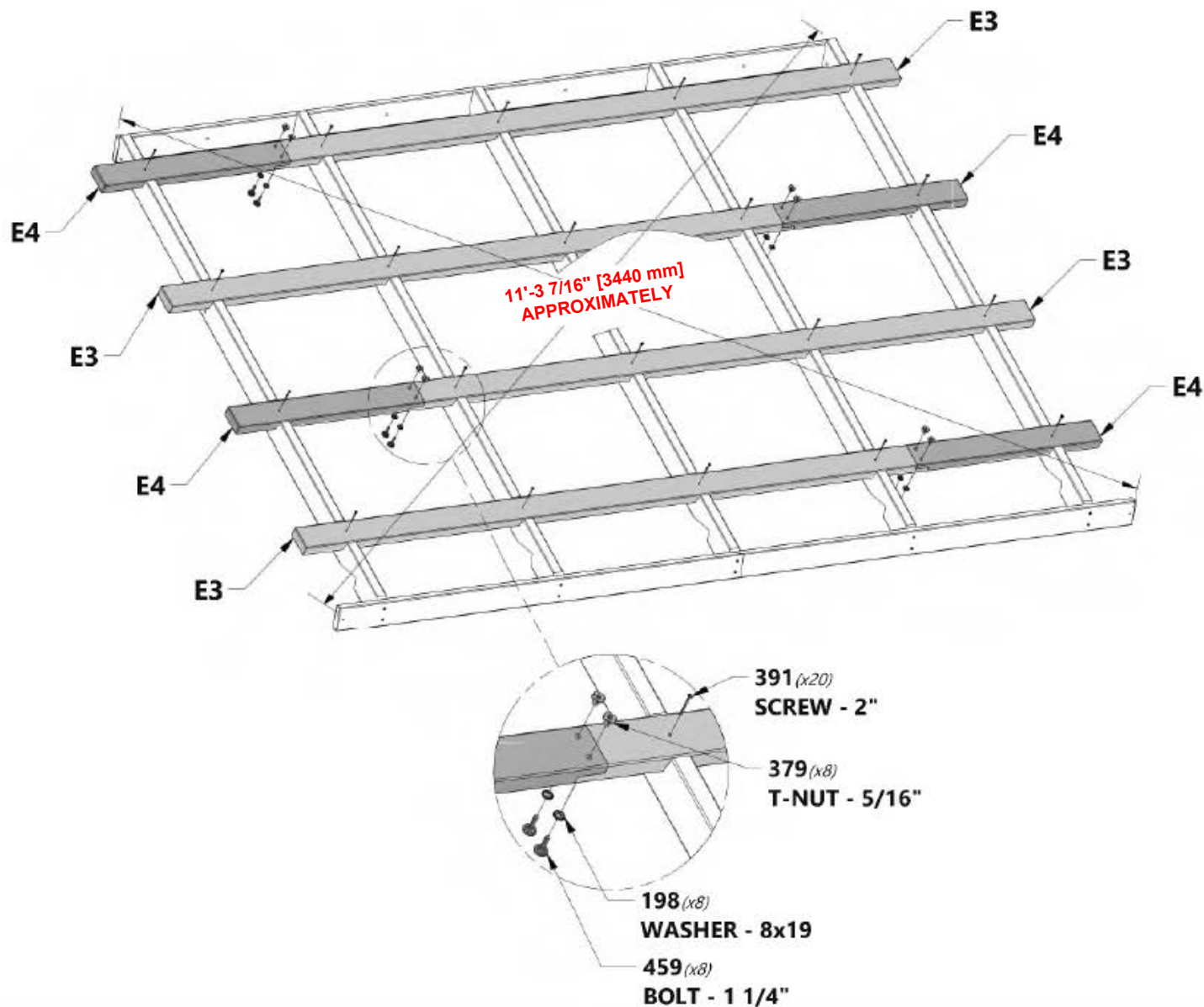
# STEP 9



## COMPLETE THIS STEP TWICE

### TIPS

- SQUARE EACH ROOF PANEL.
- MEASURE FROM CORNER TO CORNER AS SHOWN AND ENSURE THE MEASUREMENT IS THE SAME IN EACH DIRECTION.
- THEN INSTALL THE E3 & E4 BOARDS AS SHOWN.





**NOTE:**

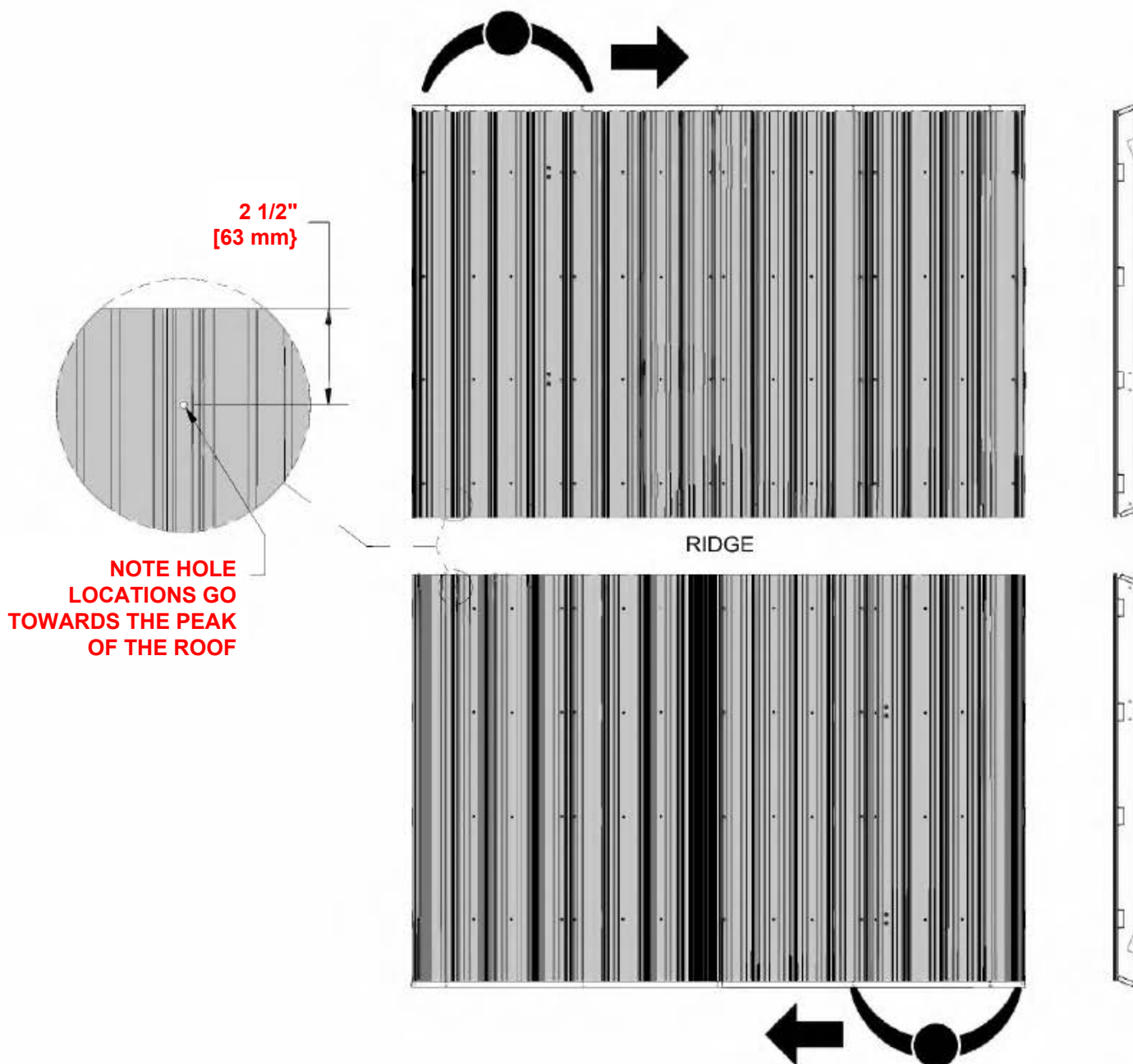
USE THIS PAGE TO FAMILIARIZE YOURSELF WITH THE ROOF PANEL & ASSIST YOU IN THE COMING STEPS.

**WARNING:**

**GLOVES SHOULD BE WORN WHEN HANDLING ROOF PANELS; EDGES ARE SHARP.**

- Note the pre-drilled holes on the top end of each sheet shown below. These holes will always go towards the ridge of the roof and will be used to install the ridge cap in a later step. Assemble each roof panel by starting on the right side and working toward the left as shown.

POSITION YOUR ROOF PANELS ON THE GROUND SO THEY MIRROR EACH OTHER AS SHOWN.  
REMOVE PROTECTIVE BLUE FILM FROM PANELS.





# Phase 2

# STEP 1

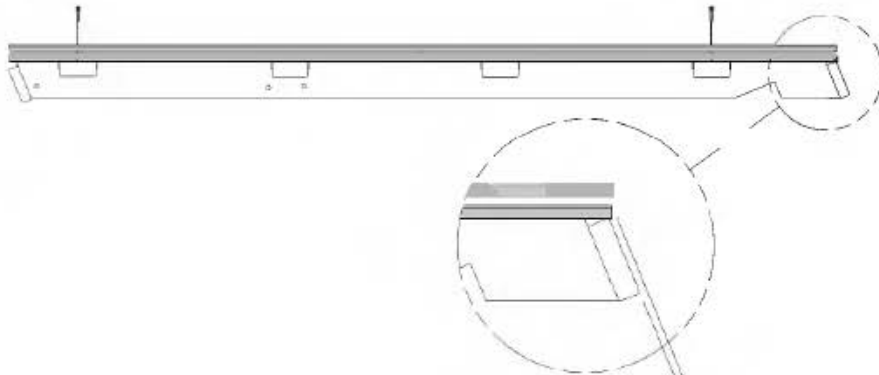


**A4M01124** | 29 GA STEEL SHEETING  
(x2)



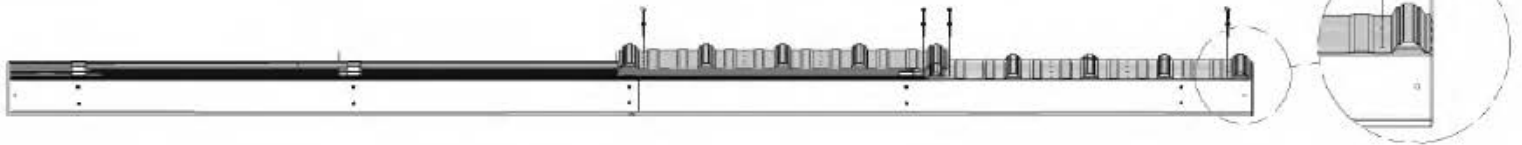
**H100760** | 10-16x1-1/4 WOODGRIP SCREW  
(x8)

**MAKE SURE YOUR ROOF PANEL IS SQUARE BEFORE MOVING ON TO THIS STEP.**



**5/16" [8 mm]**

**1/8" [3 mm]**  
**HOLD SHEETING INSIDE OF FRAME**

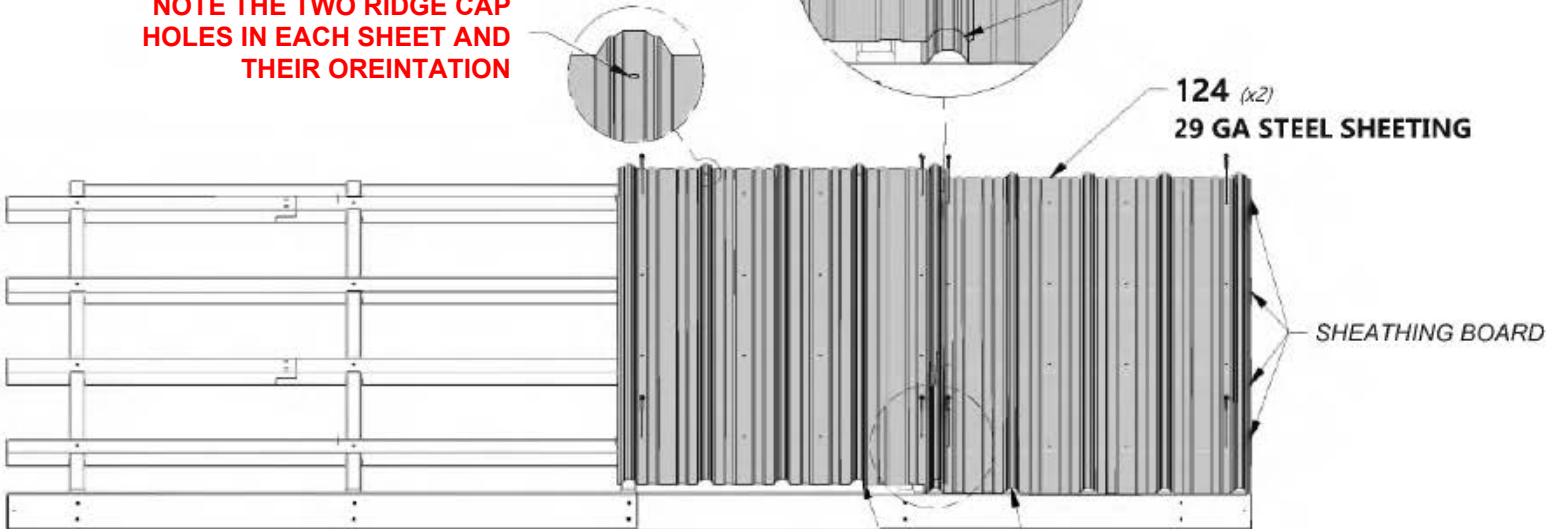


**760** (x8)  
**SCREW - 1 1/4"**

**NOTE THRU HOLES**

**NOTE RIB OVERLAP**

**NOTE THE TWO RIDGE CAP HOLES IN EACH SHEET AND THEIR ORIENTATION**



**124** (x2)  
**29 GA STEEL SHEETING**

**SHEATHING BOARD**

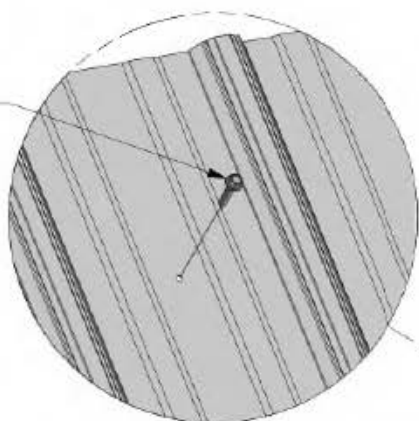
**FLUSH SHEETING**



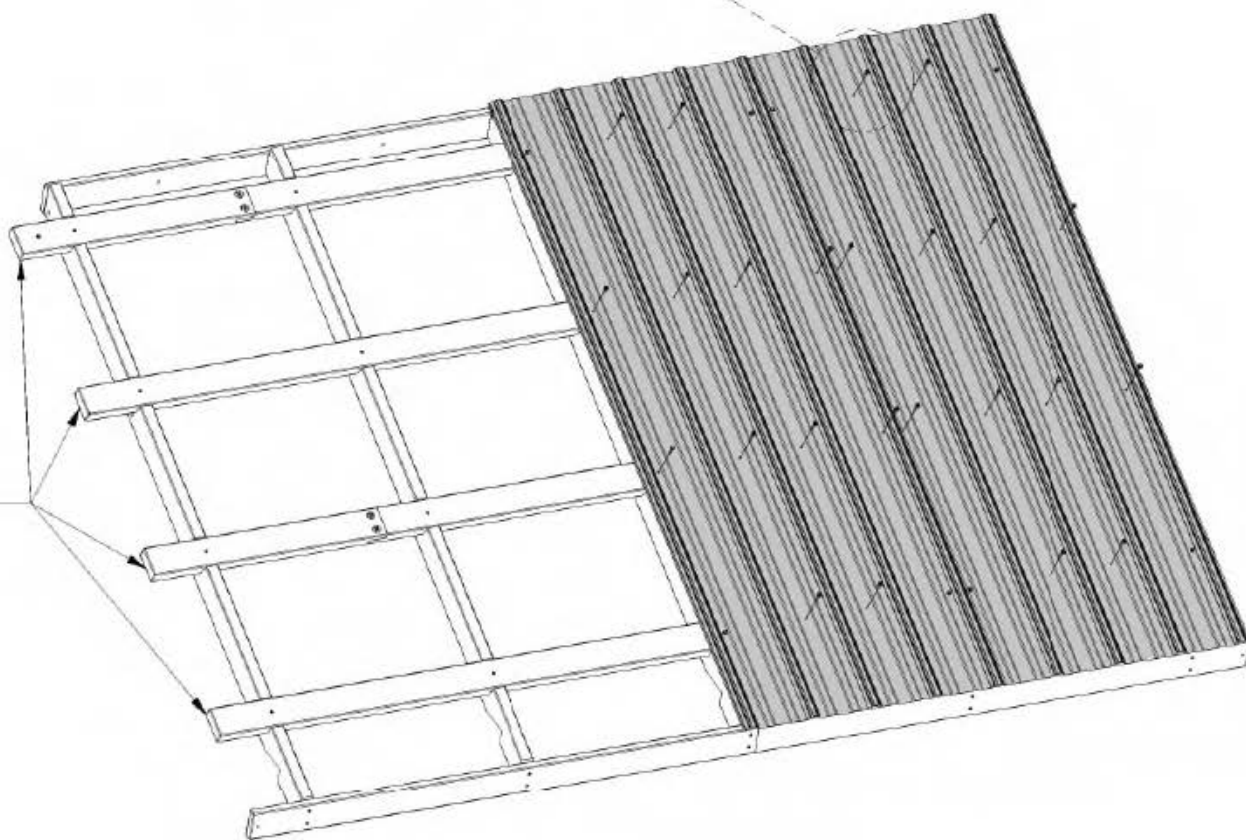


H100760 | 10-16x1-1/4 WOODGRIP SCREW  
(x24)

760 (x24)  
SCREW - 1 1/4"



SHEATHING BOARD





# Phase 2

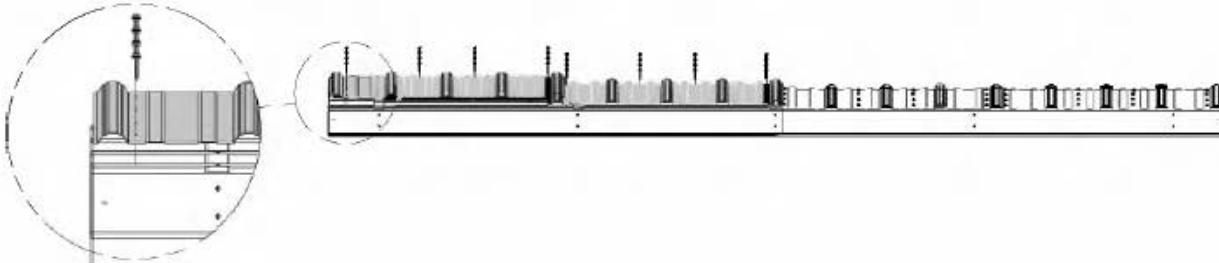
# STEP 3



**A4M01124**  
*(x2)* | 29 GA STEEL SHEETING



**H100760**  
*(x32)* | 10-16x1-1/4 WOODGRIP SCREW



**1/8" [3 mm]**  
**HOLD SHEETING INSIDE OF FRAME**

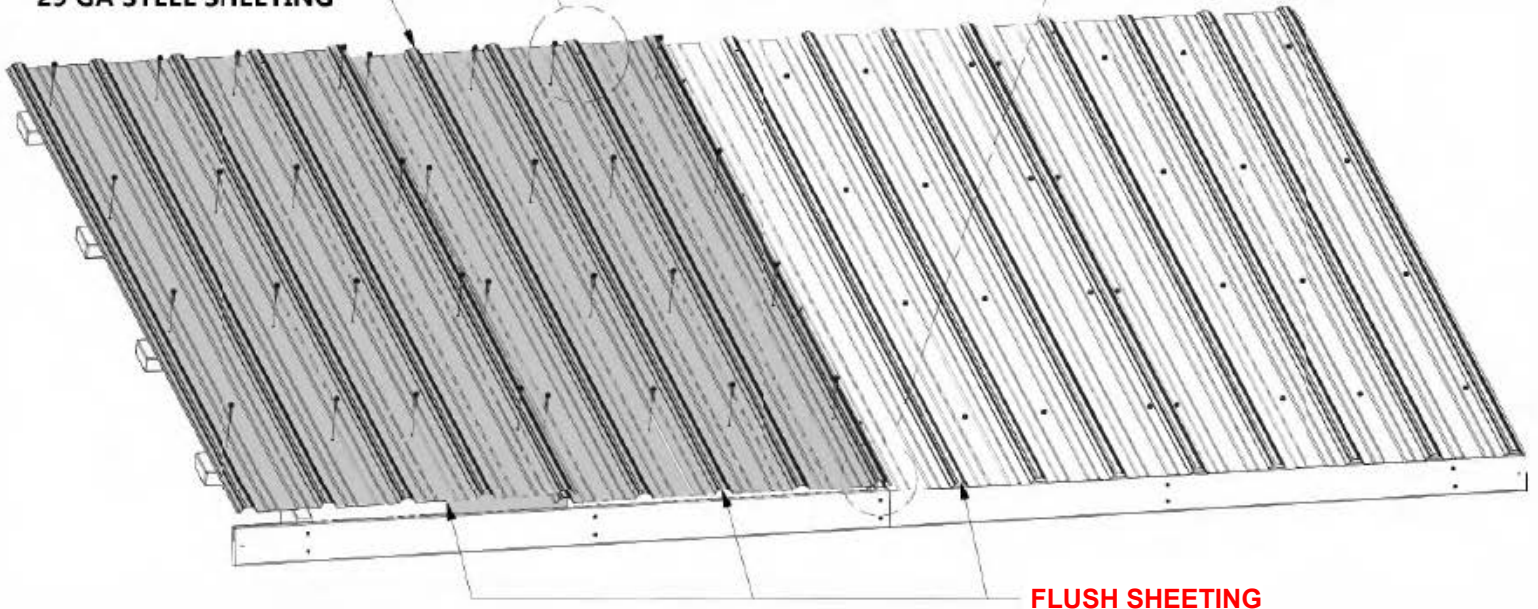
**NOTE THE TWO RIDGE CAP HOLES IN EACH SHEET AND THEIR ORIENTATION**

**760** *(x32)*  
**SCREW - 1 1/4"**

**NOTE THRU HOLES**

**NOTE RIB OVERLAP**

**124** *(x2)*  
**29 GA STEEL SHEETING**



**FLUSH SHEETING**



# Phase 2

# STEP 4

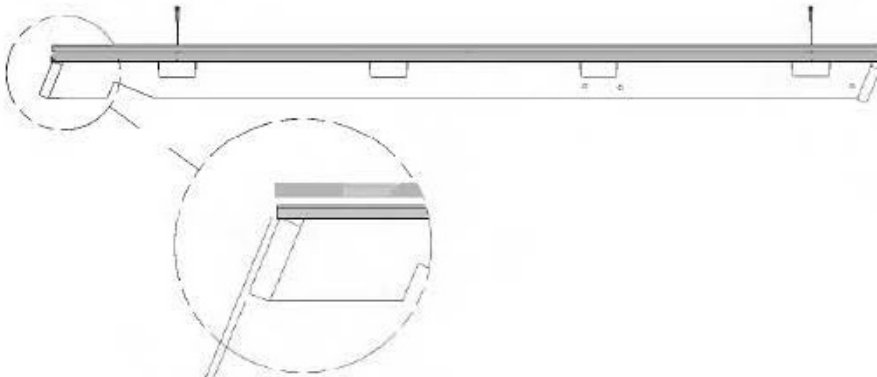


A4M01124 (x2) | 29 GA STEEL SHEETING



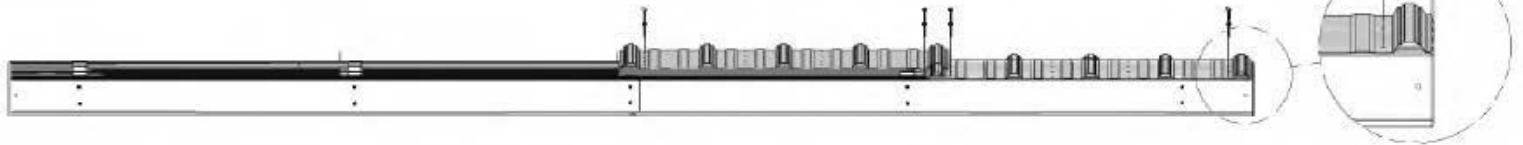
H100760 (x8) | 10-16x1-1/4 WOODGRIP SCREW

**MAKE SURE YOUR ROOF PANEL IS SQUARE BEFORE MOVING ON TO THIS STEP.**



5/16" [8 mm]

1/8" [3 mm]  
**HOLD SHEETING INSIDE OF FRAME**



760 (x8)  
SCREW - 1 1/4"

**NOTE THRU HOLES**

**NOTE RIB OVERLAP**

**NOTE THE TWO RIDGE CAP HOLES IN EACH SHEET AND THEIR ORIENTATION**

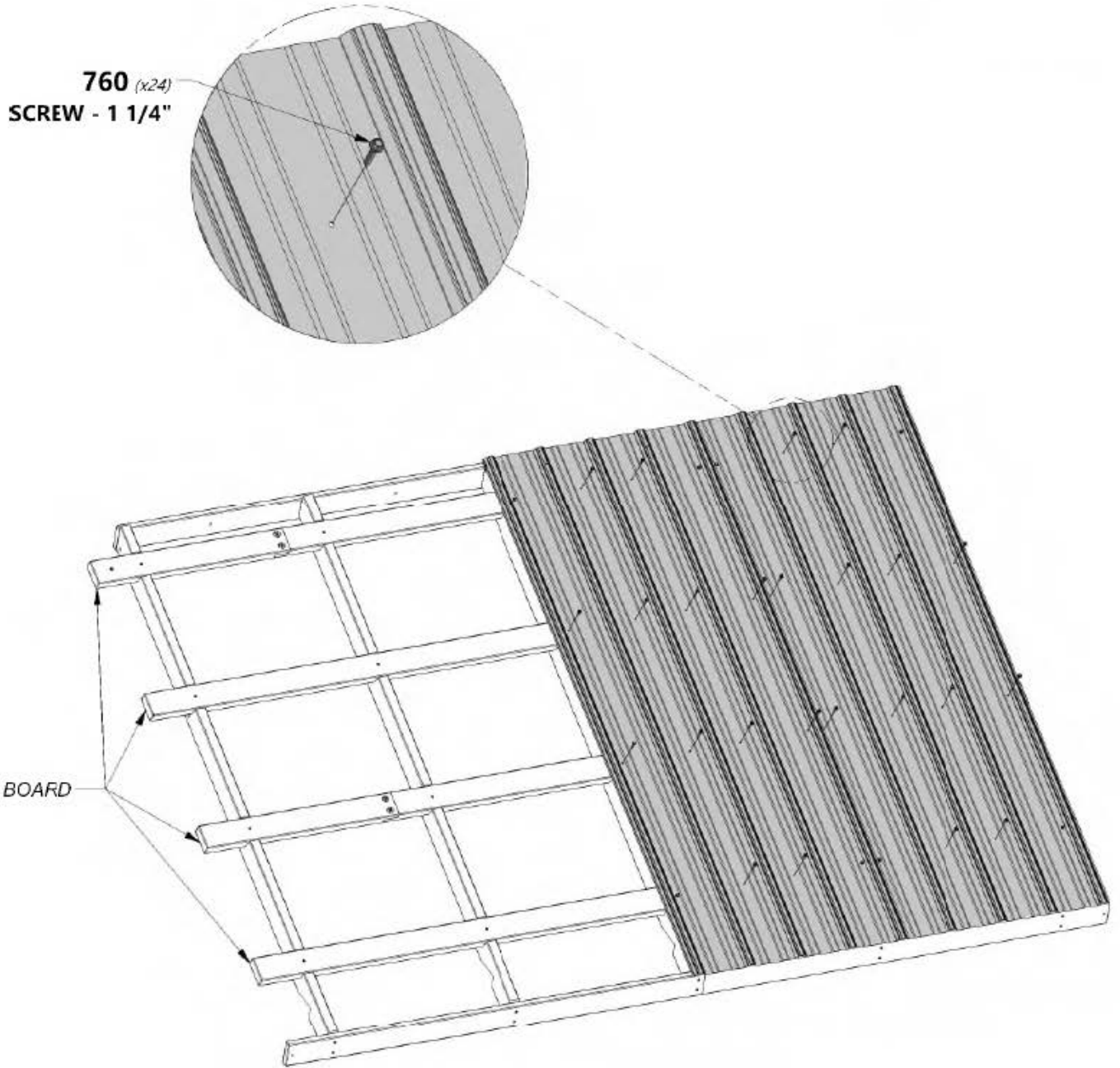
124 (x2)  
29 GA STEEL SHEETING

SHEATHING BOARD

**FLUSH SHEETING**



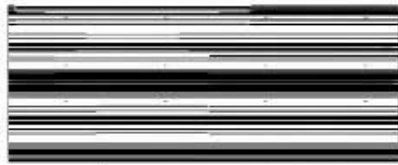
H100760 | 10-16x1-1/4 WOODGRIP SCREW  
(x24)





## Phase 2

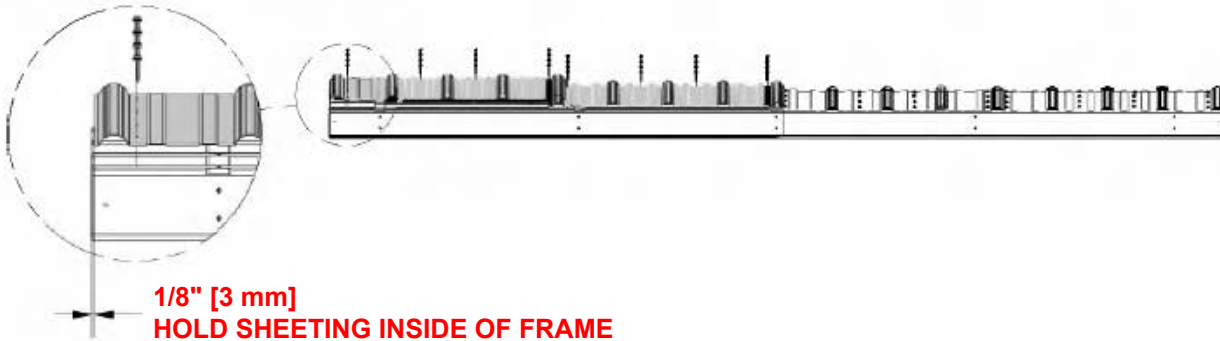
## STEP 6



A4M01124 (x2) | 29 GA STEEL SHEETING



H100760 (x32) | 10-16x1-1/4 WOODGRIP SCREW



1/8" [3 mm]  
HOLD SHEETING INSIDE OF FRAME

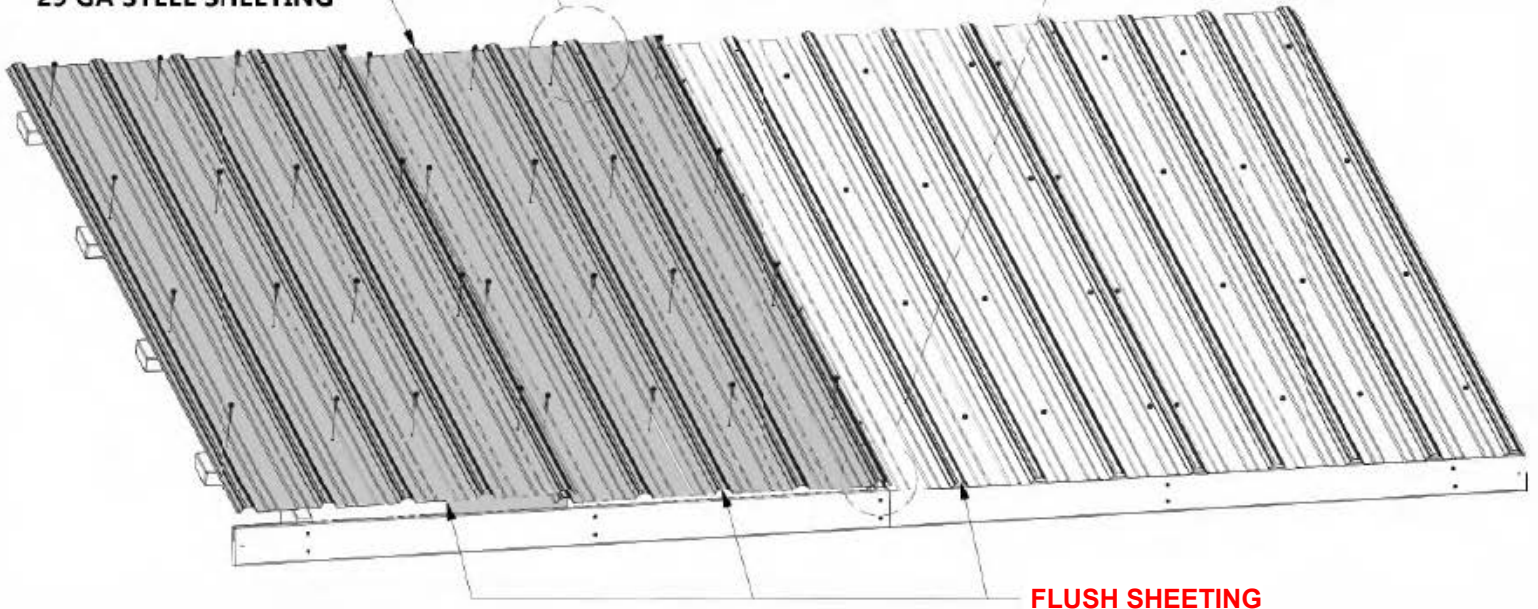
NOTE THE TWO RIDGE CAP HOLES IN EACH SHEET AND THEIR ORIENTATION

760 (x32)  
SCREW - 1 1/4"

NOTE THRU HOLES

NOTE RIB OVERLAP

124 (x2)  
29 GA STEEL SHEETING



FLUSH SHEETING



# Phase 2

# STEP 7



A4M00982 | ROOF EDGE TRIM  
(x4)



A4M00983 | ROOF EDGE TRIM SPLICE  
(x2)

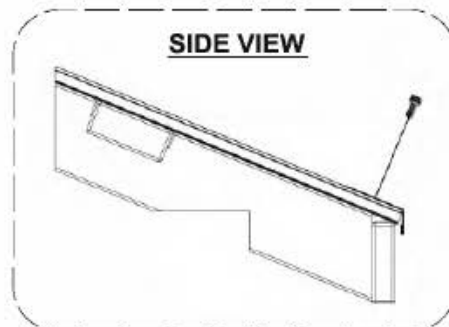
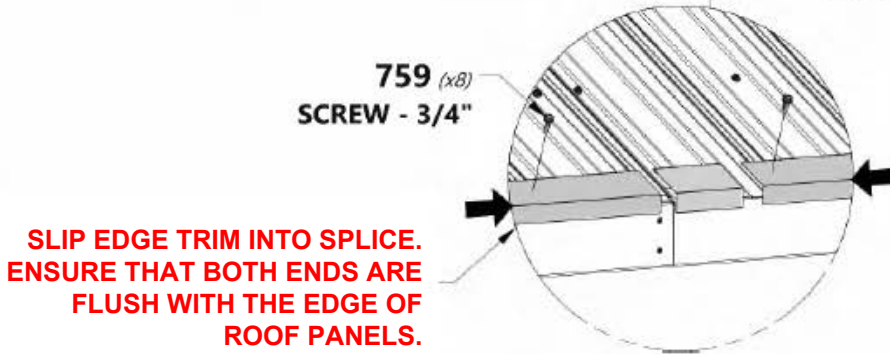
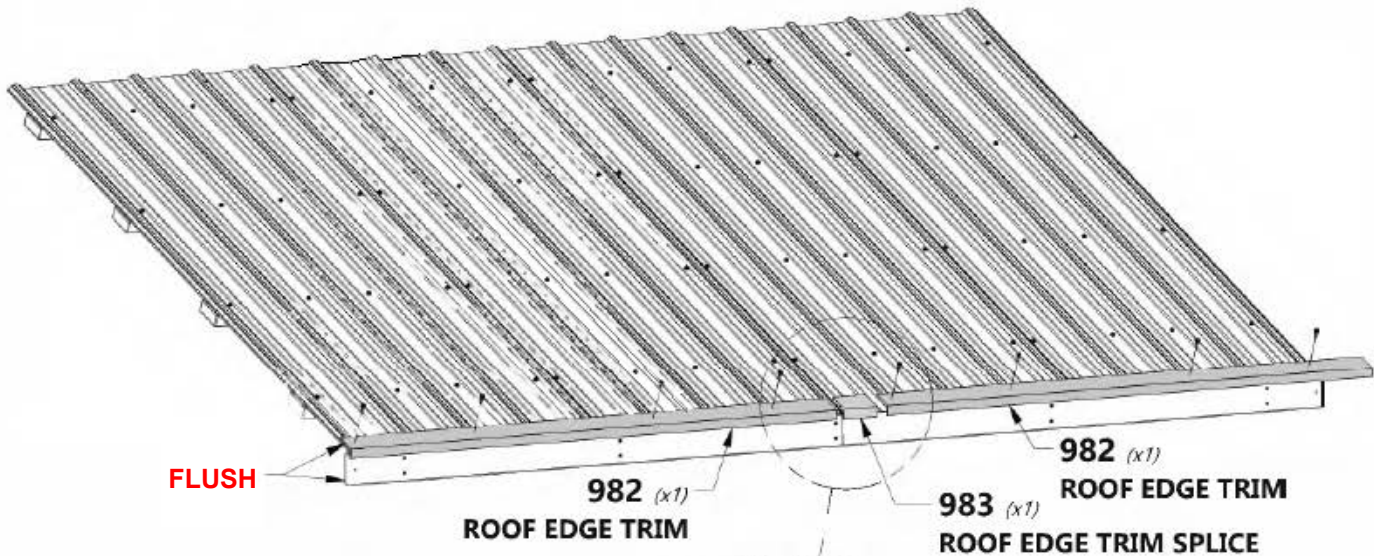


H100759 | SCREW TAPPING  
(16) | 1/4x3/4

## COMPLETE THIS STEP TWICE

**TIPS:**  
DUE TO MULTIPLE LAYERS OF METAL ON THE EDGE TRIM. IT IS RECOMMENDED THAT A 1/8" DRILL BIT IS USED TO CREATE STARTER HOLES.

**SCREWS GO THROUGH EDGE TRIM AND INTO THE TOP OF THE RIBS IN THE APPROXIMATE LOCATIONS SHOWN.**





**H100829** | BOLT WH BLK  
(x4) | 5/16x9 1/2



**H100770** | WASHER FLAT  
(x4) | 5/16 BLK



**H100479** | NUT LOCK BLK  
(x4) | 5/16

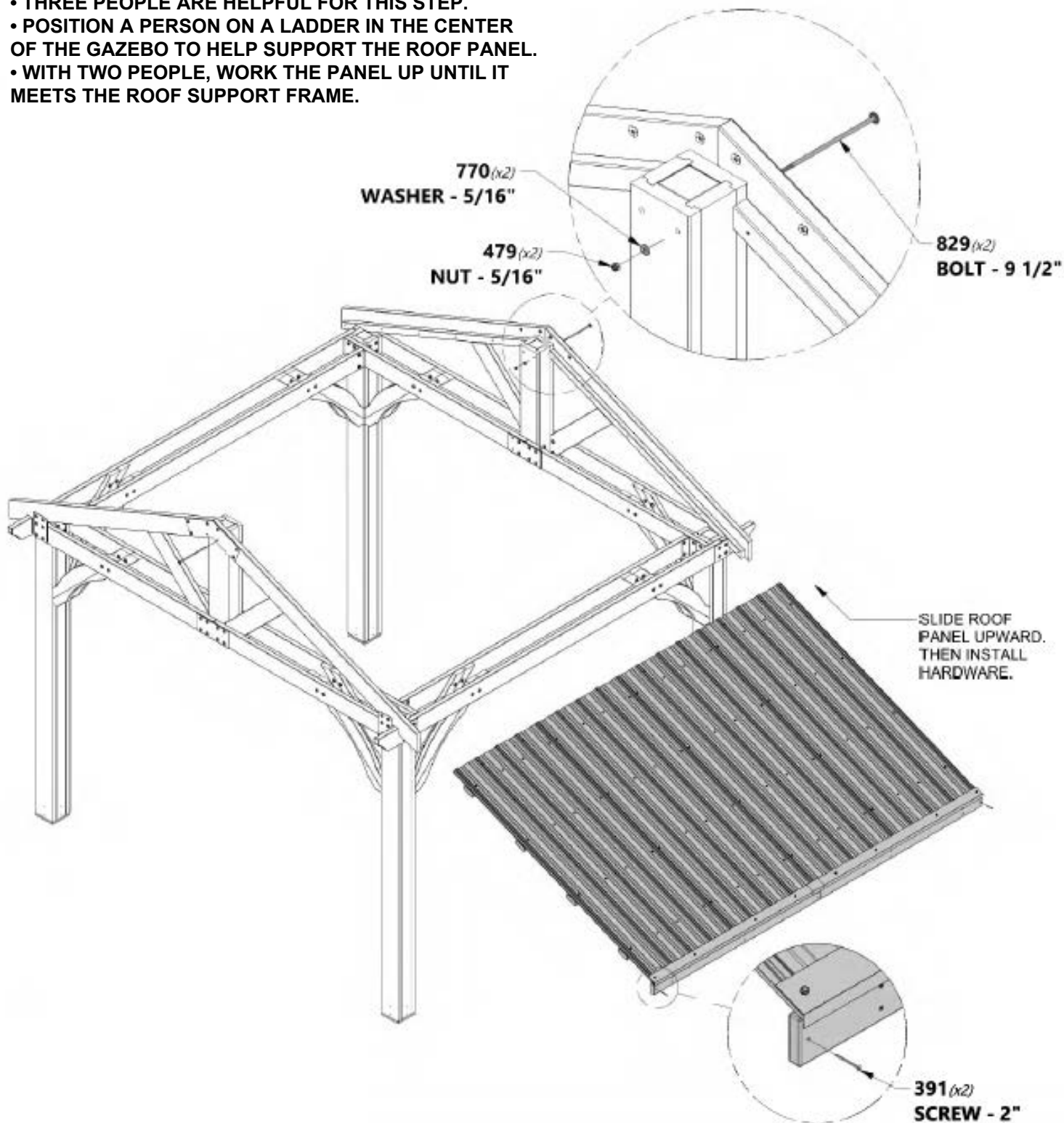


**H100391** | SCREW PFH BLK  
(x4) | 8x2

### COMPLETE THIS STEP TWICE TO INSTALL BOTH ROOF PANELS

#### TIPS:

- THREE PEOPLE ARE HELPFUL FOR THIS STEP.
- POSITION A PERSON ON A LADDER IN THE CENTER OF THE GAZEBO TO HELP SUPPORT THE ROOF PANEL.
- WITH TWO PEOPLE, WORK THE PANEL UP UNTIL IT MEETS THE ROOF SUPPORT FRAME.





# Phase 2

# STEP 9



**H100407** | BOLT WH BLK  
(x4) | 5/16x1 1/2



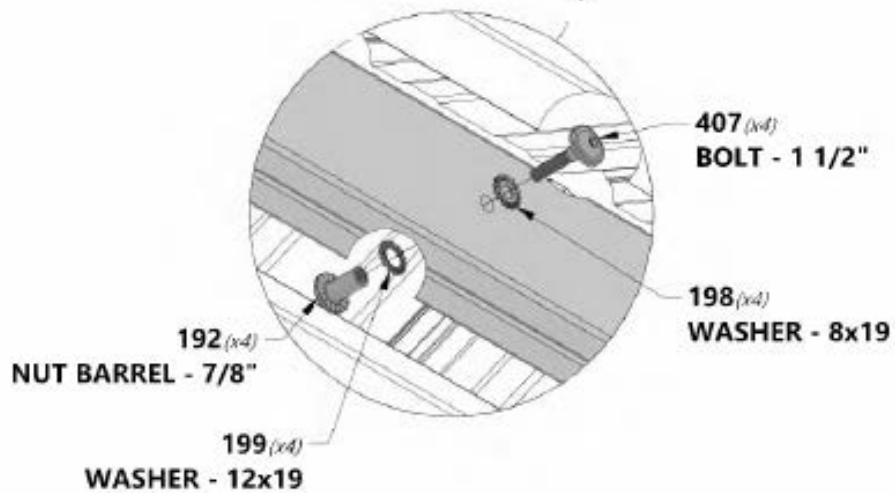
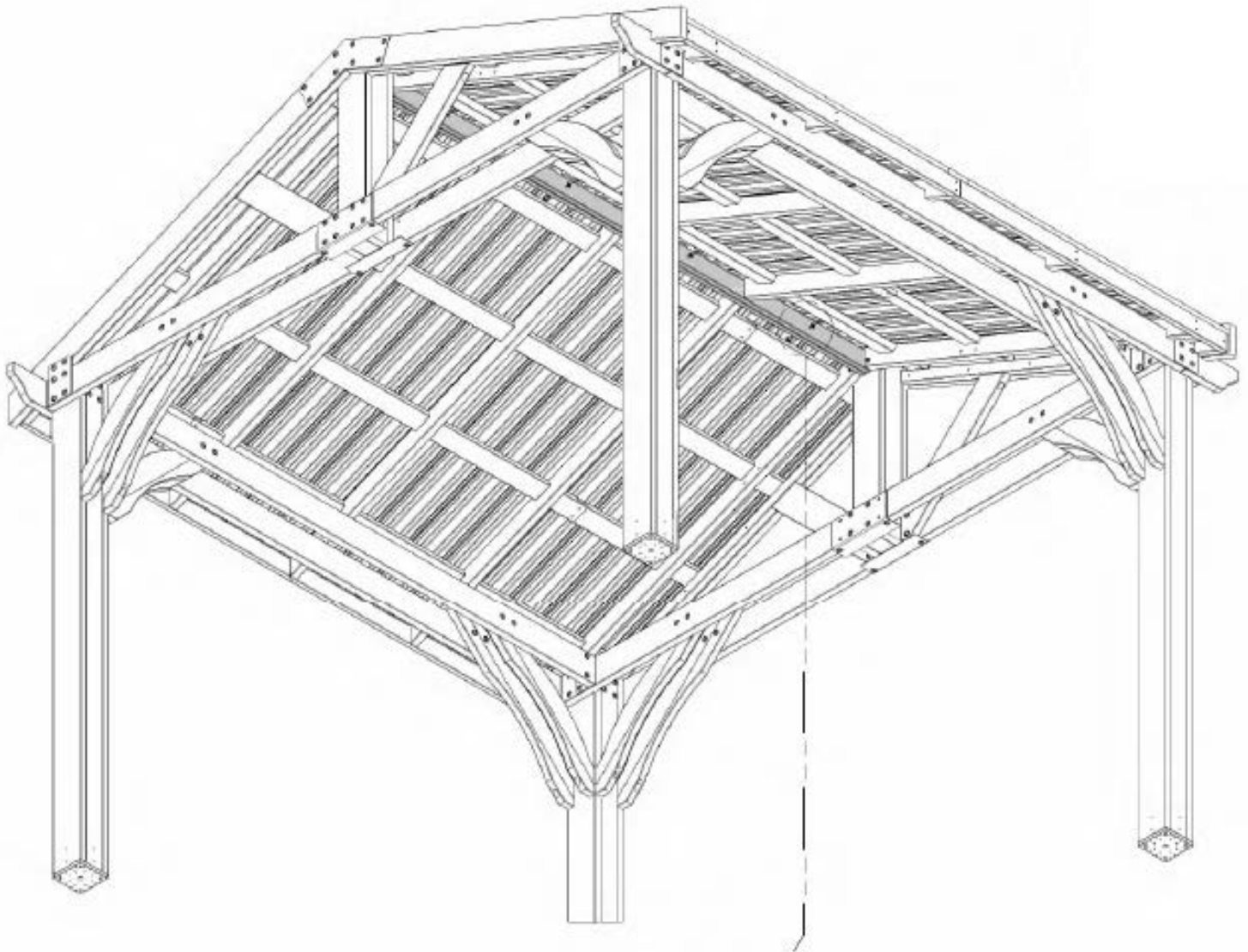
**H100192** | NUT BARREL WH BLK  
(x4) | 5/16x7/8



**H100198** | WASHER LOCK EXT BLK  
(x4) | 8x19



**H100199** | WASHER LOCK EXT BLK  
(x4) | 12x19







# Phase 2

# STEP 10



**D7** | ANGLE BRACE - W4L13082  
(4) | 1 3/8"x5 1/4"x32 3/8" (36x134x823)



**H100194** | BOLT WH BLK  
(x8) | 5/16x2 1/2



**H100205** | BOLT WH BLK  
(x8) | 5/16x2-1/4



**H100192** | NUT BARREL WH BLK  
(x16) | 5/16x7/8

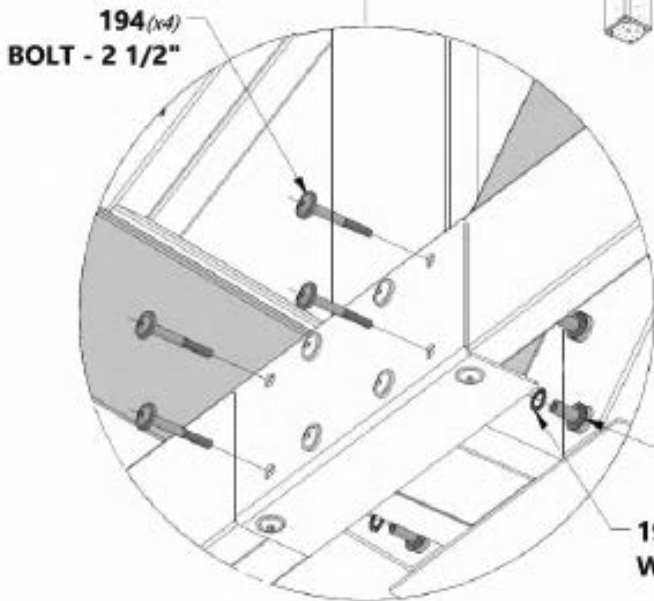
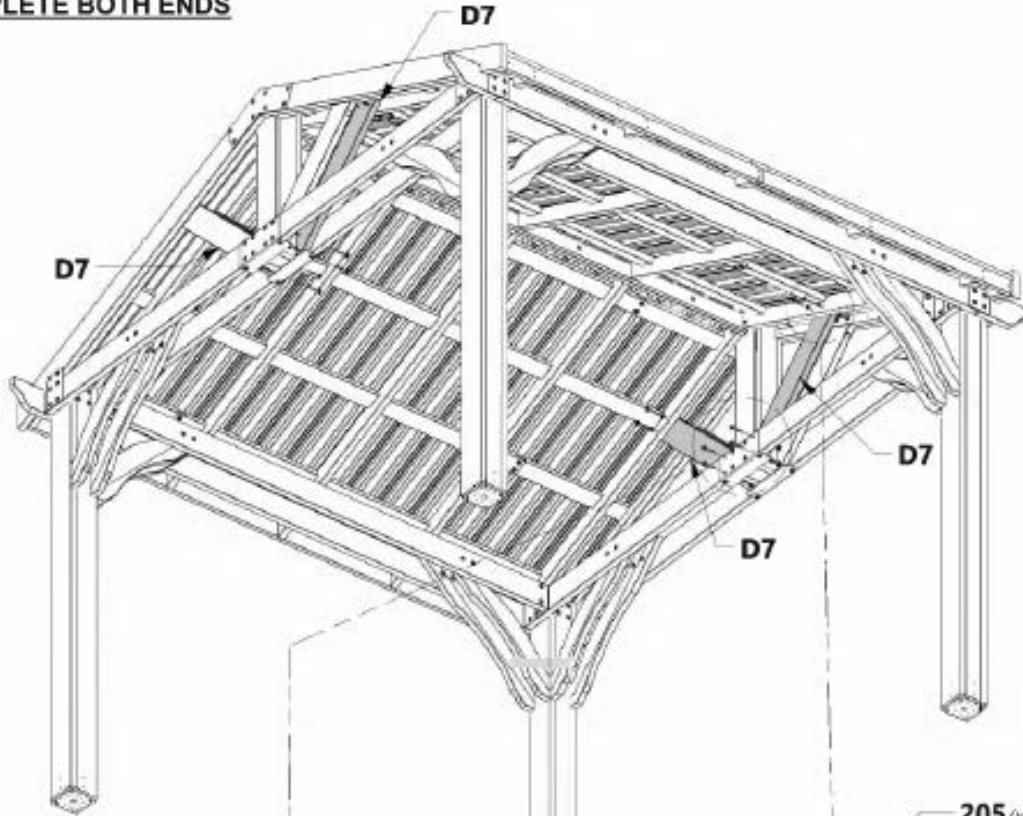


**H100199** | WASHER LOCK EXT BLK  
(x16) | 12x19

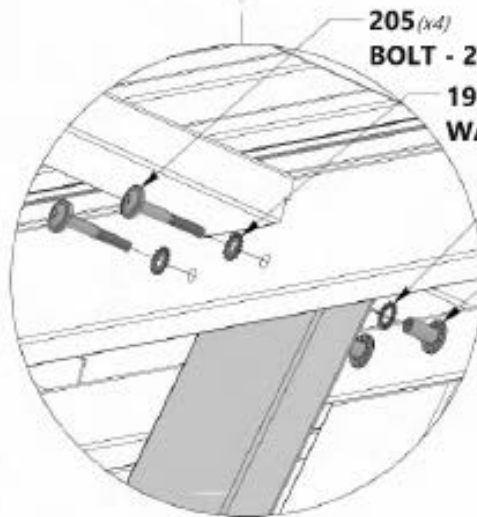


**H100198** | WASHER LOCK EXT BLK  
(x8) | 8x19

## COMPLETE BOTH ENDS



**194(x4)**  
BOLT - 2 1/2"



**205(x4)**  
BOLT - 2 1/4"

**198(x4)**  
WASHER - 8x19

**199(x4)**  
WASHER - 12x19

**192(x4)**  
NUT BARREL - 7/8"

**192(x4)**  
NUT BARREL - 7/8"

**199(x4)**  
WASHER - 12x19



## Phase 2

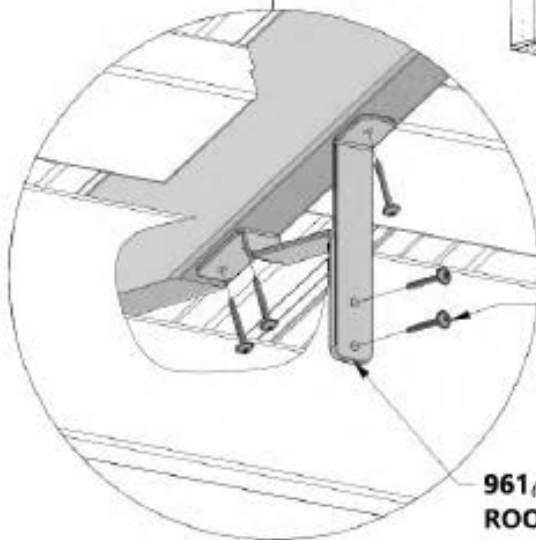
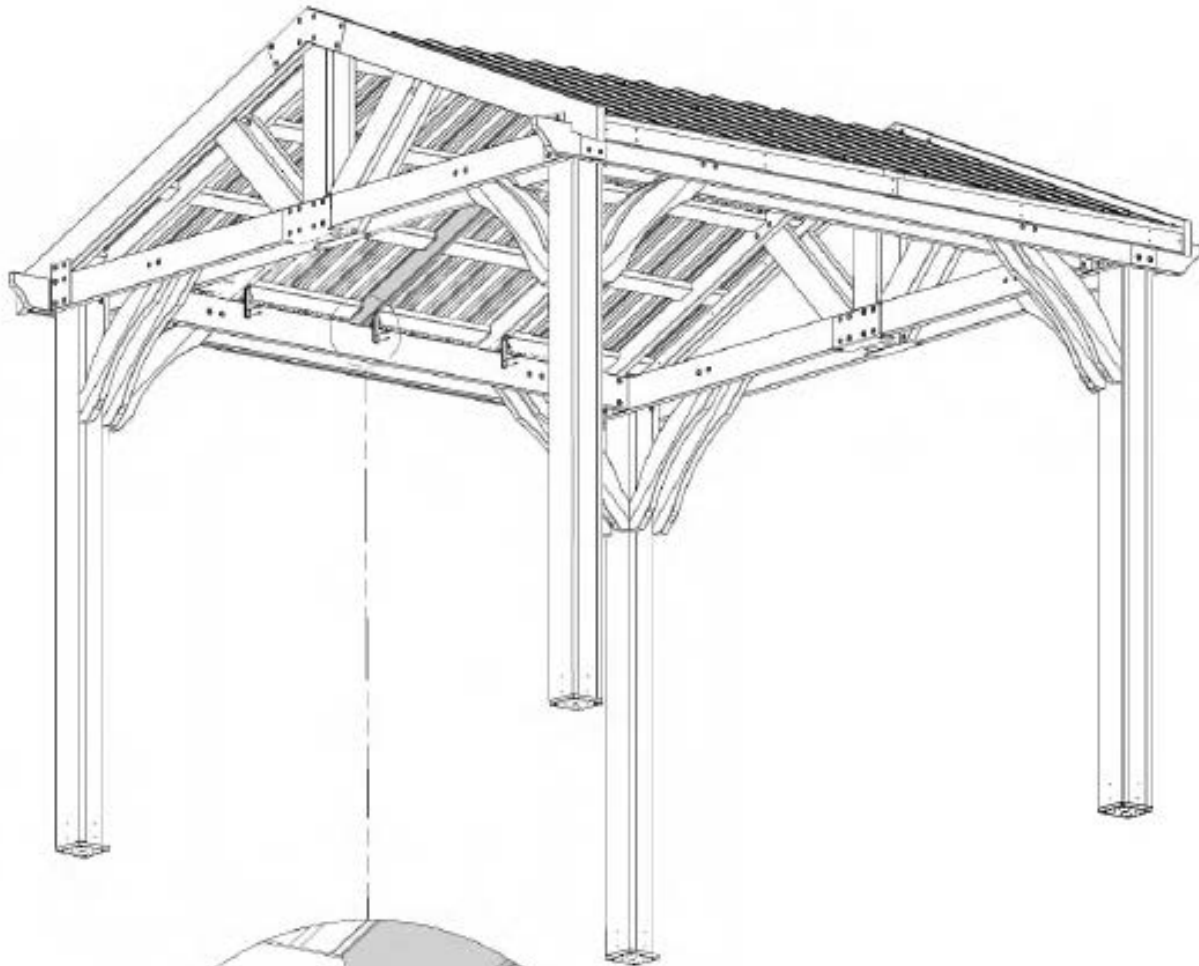
## STEP 11



**A4M00961**  
(x6) | **ROOF BRACKET**



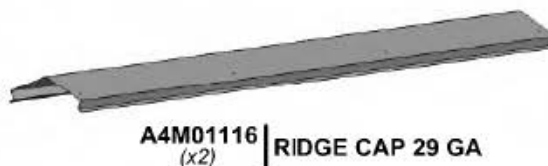
**H100536** | **SCREW PWH BLK**  
(x30) | 8x1 1/4



**536** (x30)  
**SCREW - 1/4"**

**961** (x6)  
**ROOF BRACKET**

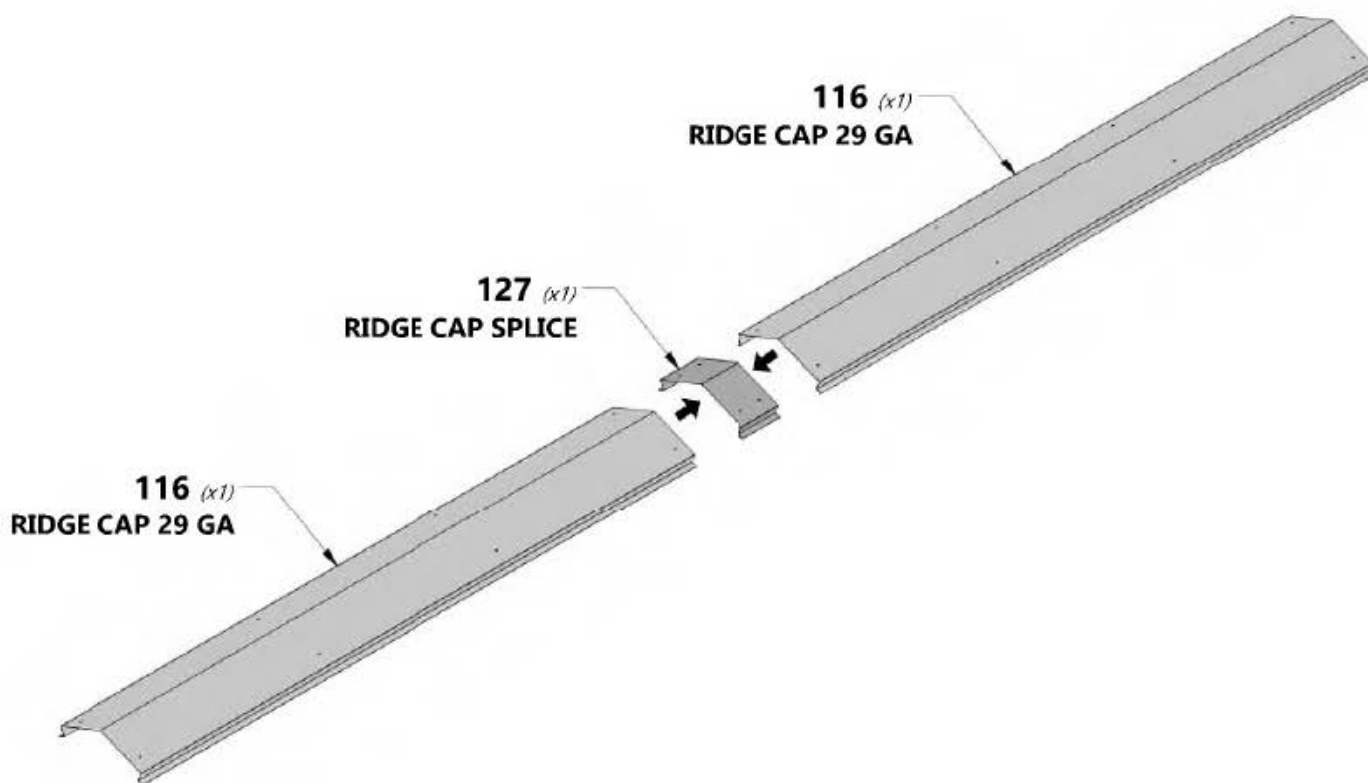
**CENTER ROOF BRACKETS ON  
EACH RAFTER AND ATTACH**



## RIDGE CAP ASSEMBLY PREPARATION

### TIPS

- REMOVE BLUE FILM FROM RIDGE PARTS.
- THEN ASSEMBLE THE PROVIDED RIDGE CAP SPLICE BY SLIDING EACH RIDGE CAP INTO THE SPLICE AS SHOWN UNTIL CENTERED.





# Phase 2

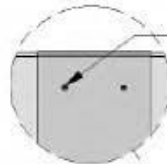
# STEP 13

**J10** | RIDGE CAP STIFFENER - W4L13591  
(x2) | 1"x2 3/8"x69 1/4" (24x60x1760)

**J9** | RIDGE CAP STIFFENER - W4L13590  
(x2) | 1"x2 3/8"x47 5/8" (24x60x1210)

**A6P00398** | RIDGE CAP PROTECTOR  
(x2)

**H100833** | SCREW WOODGRIP  
(16) | 10x3/4



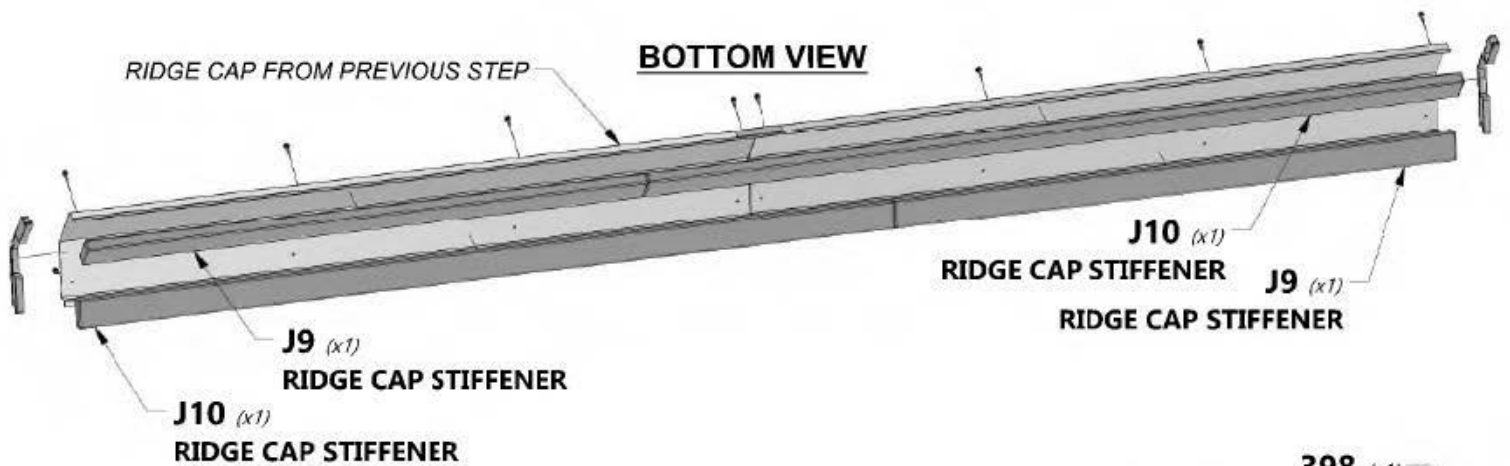
ASSEMBLE BY ALIGNING THE HOLES ON EACH RIDGE CAP TO THE HOLES IN THE RIDGE CAP SPLICE TO ENSURE THAT THE OVERALL LENGTH IS 117 1/16" [2974 mm] MAX.

**TOP VIEW**

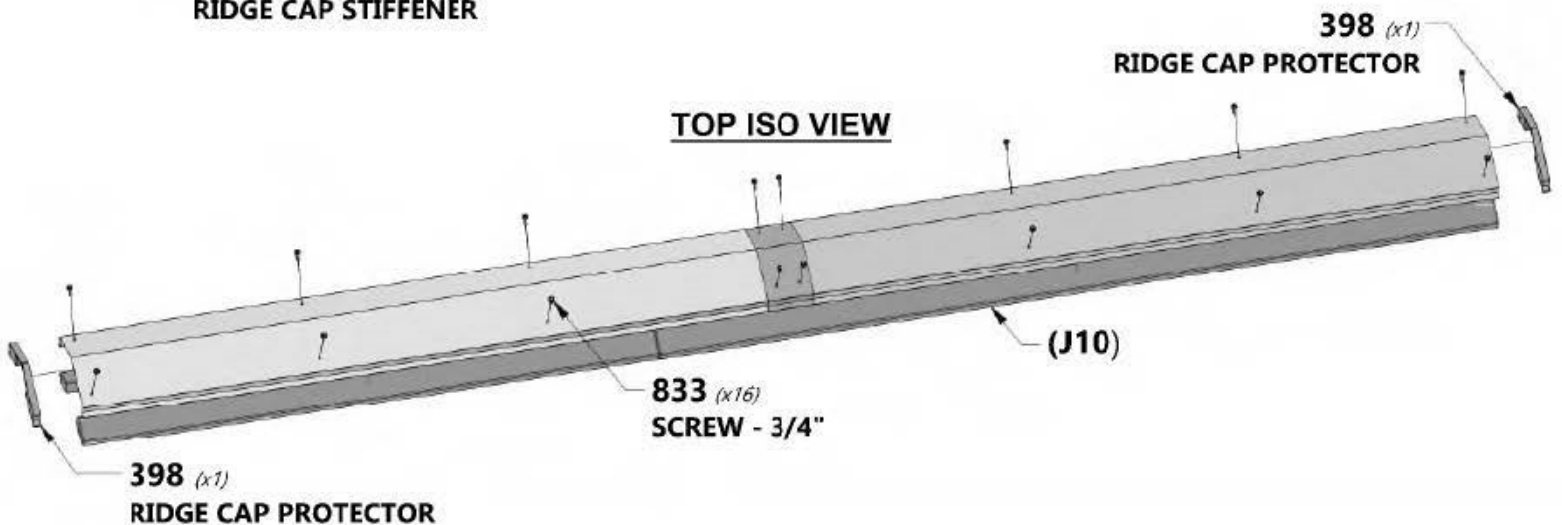


117 1/16" [2974 mm] MAX  
(WHEN ASSEMBLED)

**BOTTOM VIEW**



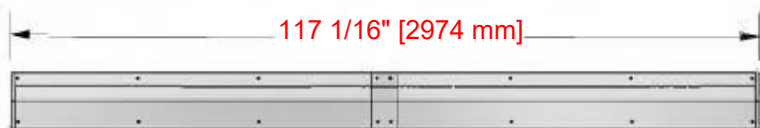
**TOP ISO VIEW**





# Phase 2

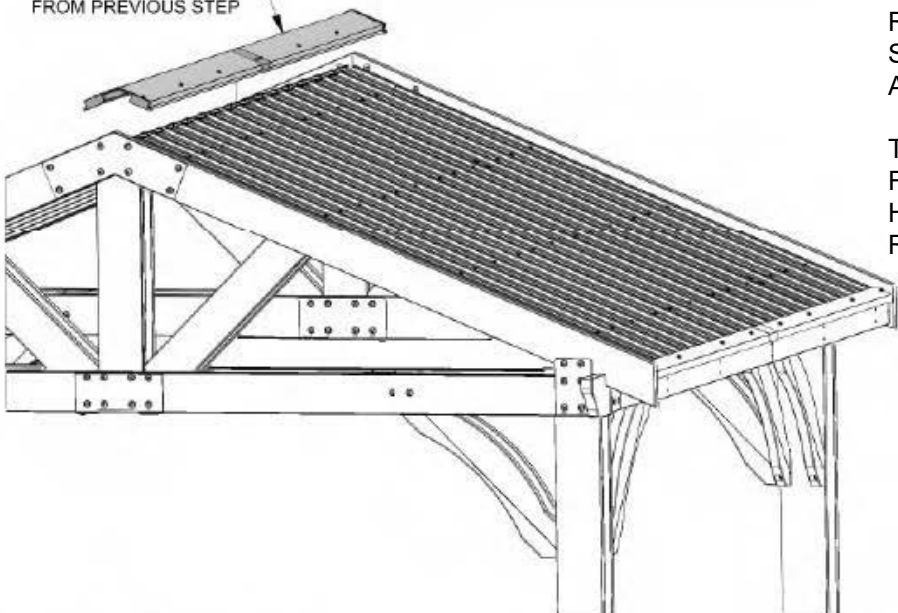
# STEP 14



RIDGE CAP ASSEMBLY FROM PREVIOUS STEP

 **H100392 | SCREW PWH BLK**  
(x16) | 8x3/4

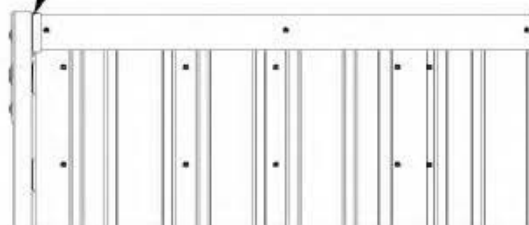
RIDGE CAP ASSEMBLY FROM PREVIOUS STEP



**NOTE:**  
RIDGE CAP ASSEMBLY HAS BEEN DESIGNED FOR SAFE INSTALLATION FROM A LADDER AND ROOF ACCESS IS NOT REQUIRED NOR RECOMMENDED.

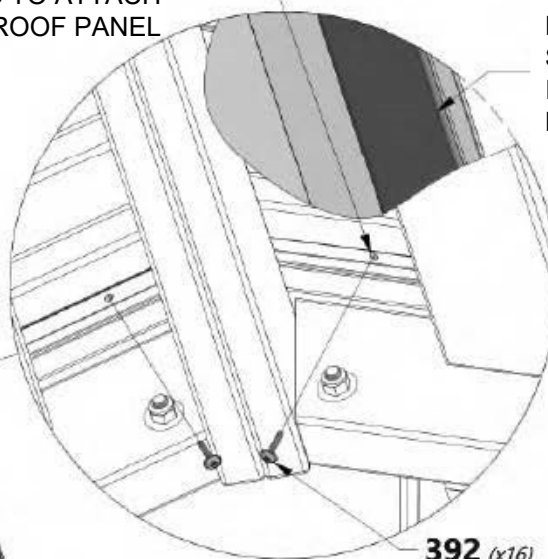
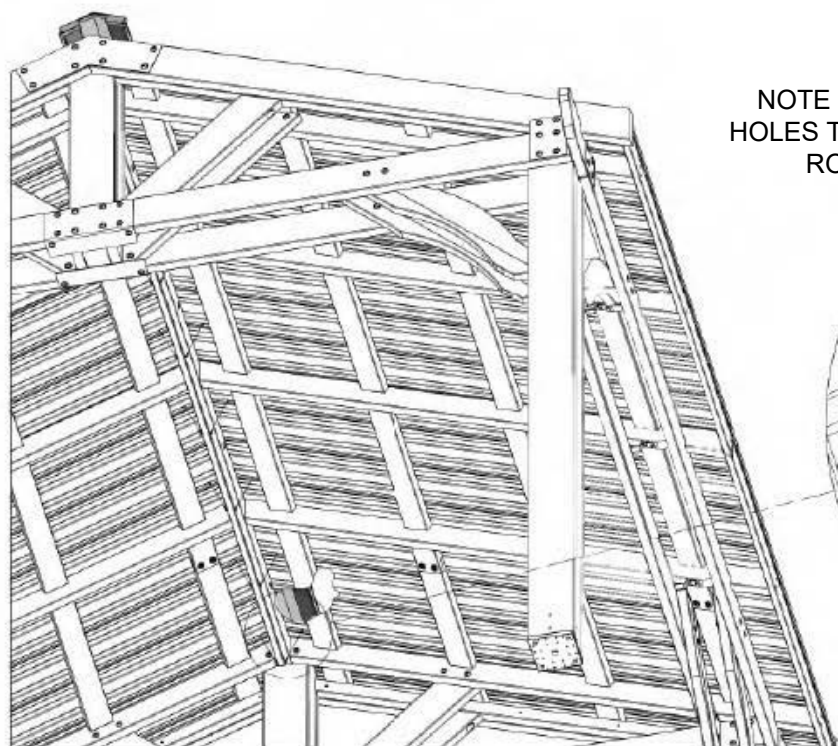
**TIPS:**  
FOR PROPER INSTALLATION, USE AN ADULT HELPER TO KEEP DOWNWARD PRESSURE ON THE RIDGE CAO DURING SCREW INSTALLATION.

USING AN ADULT HELPER, SLIDE RIDGE CAP ASSEMBLY CAREFULLY ACROSS THE ROOF RIDGE UNTIL BOTH ENDS SIT INSIDE RAFTERS AS SHOWN.



**NOTE USE PILOT HOLES TO ATTACH ROOF PANEL**

**NOTE ALL SCREWS LAND IN STIFFENER BOARDS**

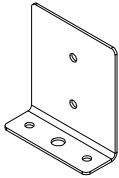


**392 (x16)**  
**SCREW - 3/4"**

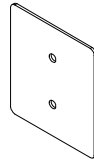


# Phase 3

# STEP 1



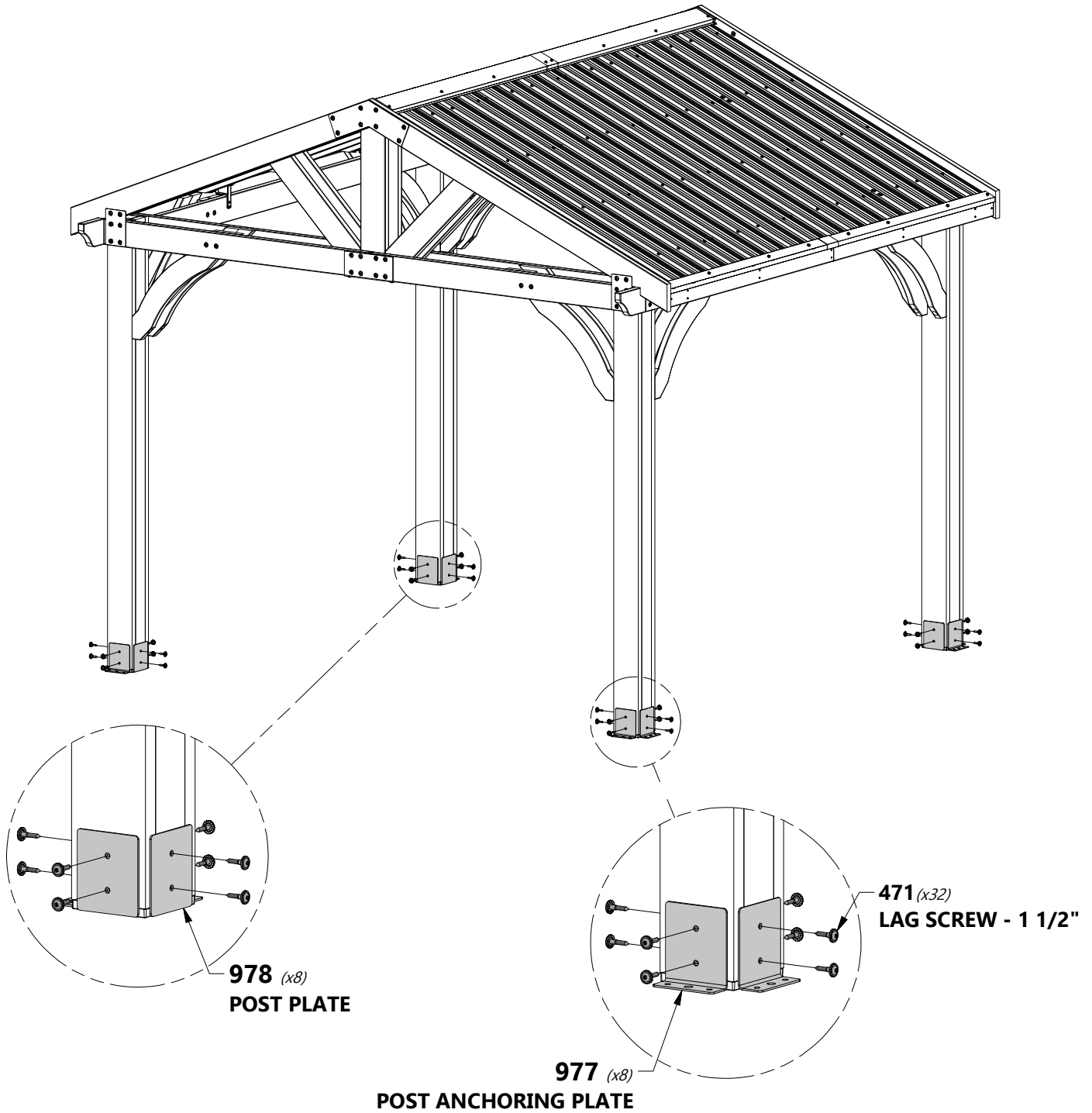
**A4M00977** | POST ANCHORING PLATE  
*(x8)*



**A4M00978** | POST PLATE  
*(x8)*



**H100471** | LAG SCREW WH BLK  
*(x32)* | 5/16x1 1/2





# Phase 3

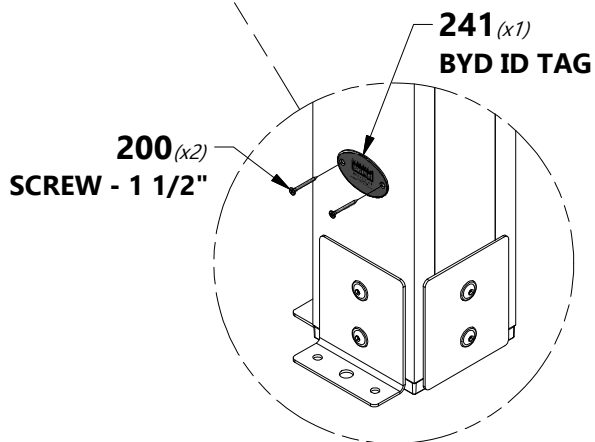
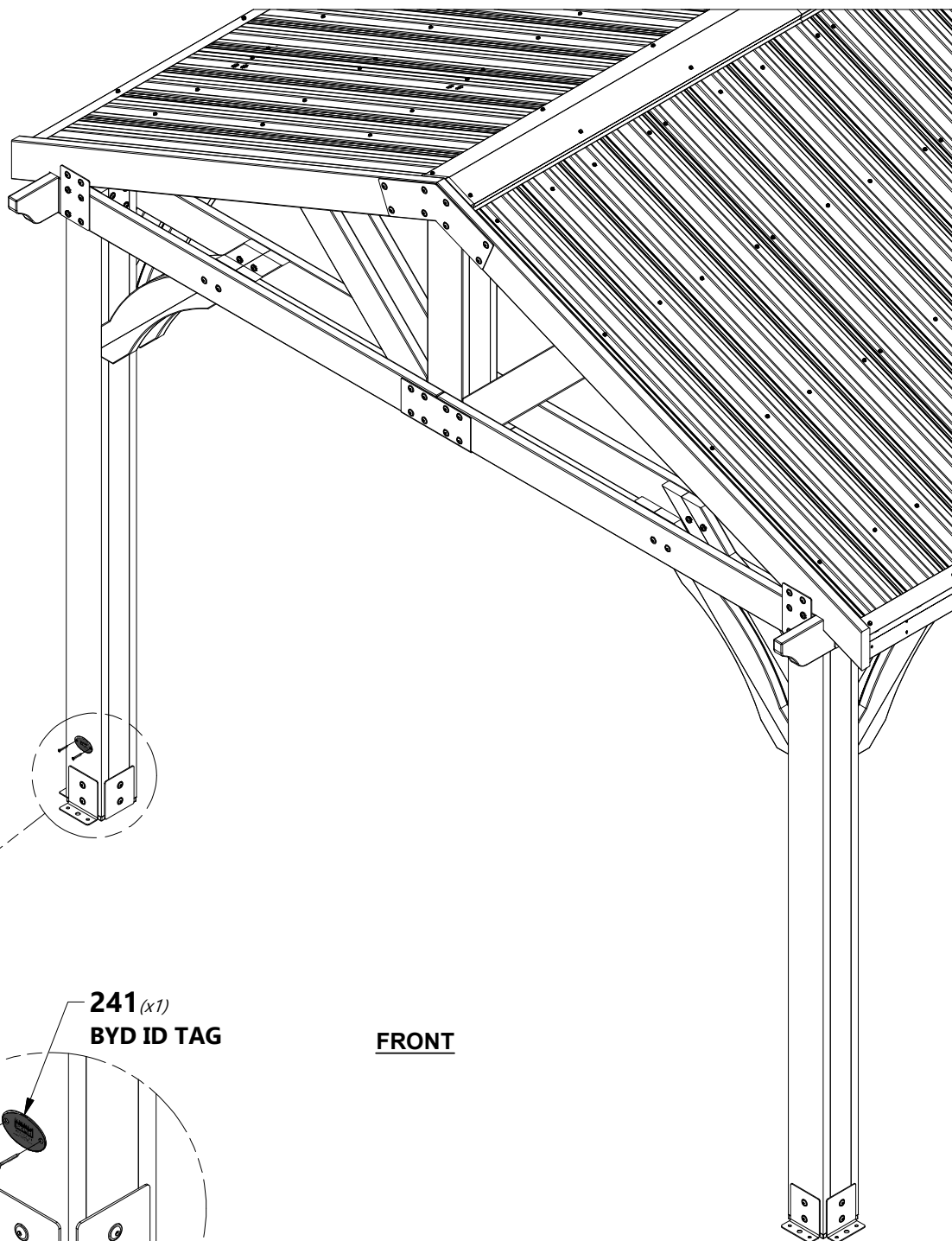
# STEP 2



A100241 | BYD ID TAG (SMALL) WITHOUT AGES  
(x1)



H100200 | SCREW PFH BLK  
(x2) | 8x1 1/2



FRONT



# Phase 3

# STEP 3



**H100120 | SCREW CONCRETE ANCHOR**  
(x16) 1/4x2

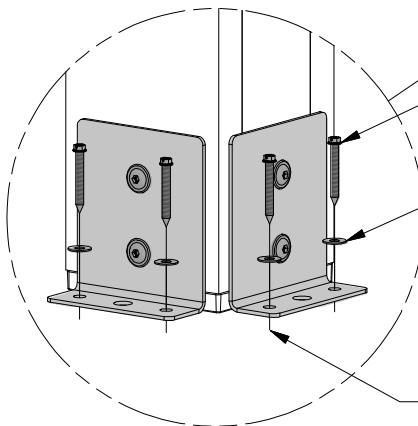
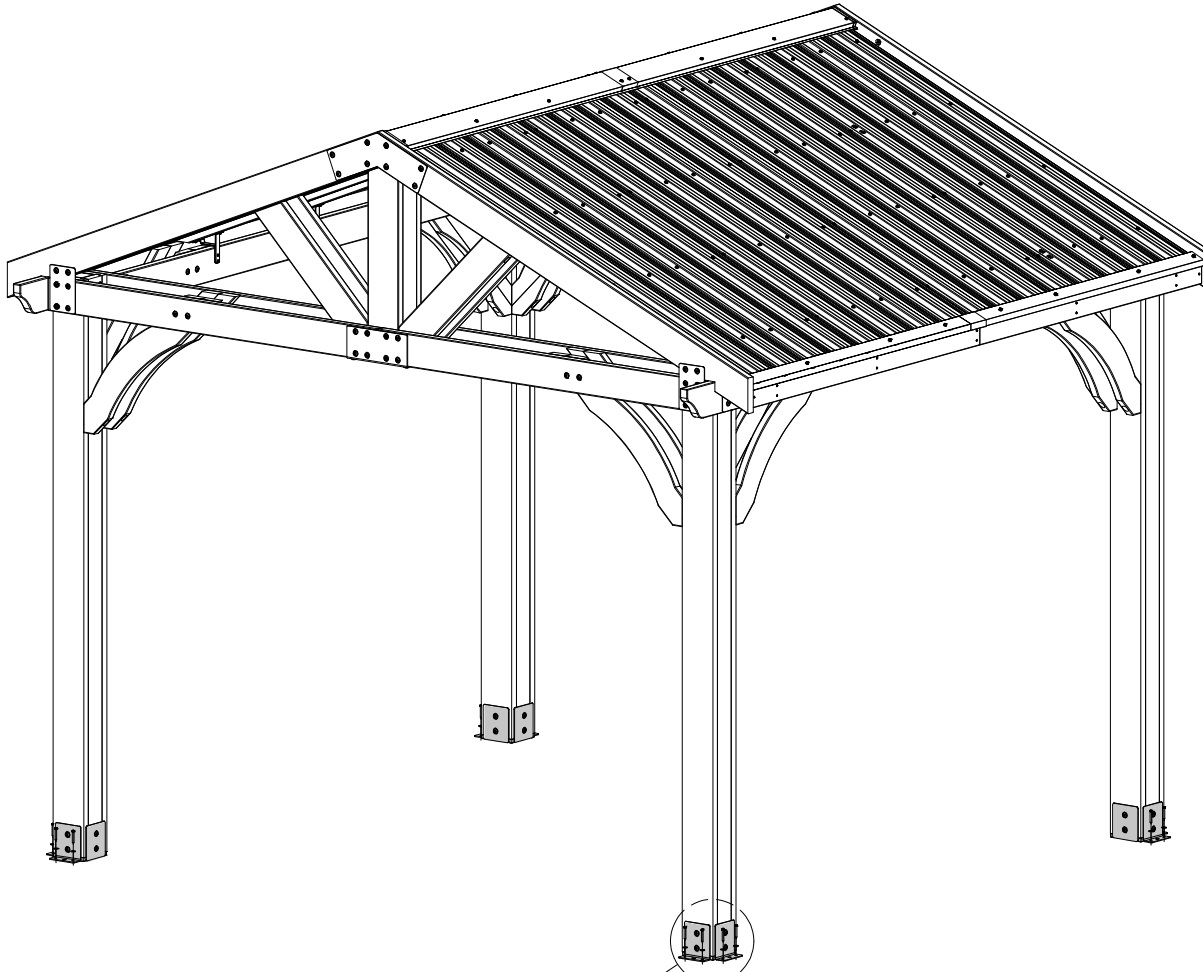


**H100630 | WASHER FLAT BLK**  
(x16) 8x19

### NOTE:

MANUFACTURER RECOMMENDS INSTALLATION ON CONCRETE SURFACE OR CONCRETE POST PADS. SEE BELOW.

FOR INSTALLATION ON WOOD DECK, YOU MUST ENSURE THERE IS AMPLE STRUCTUAL SUPPORT UNDER DECK.

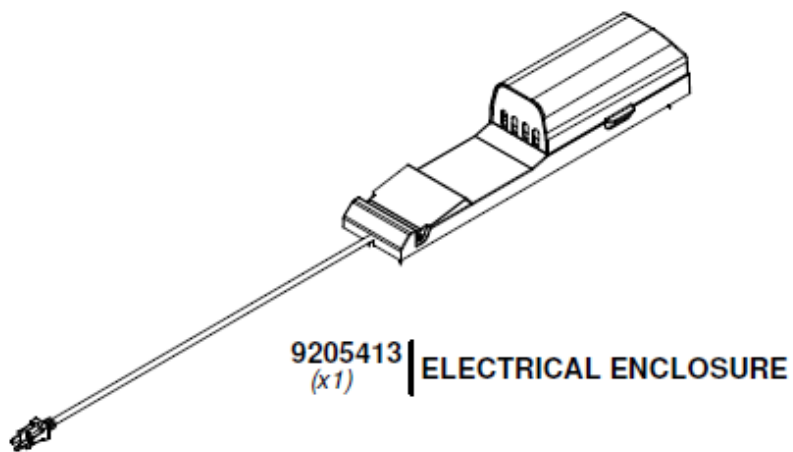


**120 (x16)**  
**SCREW - 2"**

**630 (x16)**  
**WASHER - 8x19**

PRE-DRILL HOLES FOR CONCRETE ANCHORS USING A 3/16" CONCRETE DRILL BIT.





FOR ELECTRICAL ENCLOSURE INSTALLATION REFER TO ASSEMBLY INSTRUCTIONS THAT COMES PACKAGED WITH THE ELECTRICAL ENCLOSURE KIT. INSTALL ON ANY POST THAT IS DESIRED. FOLLOW DIRECTIONS FOR PROPER INSTALLATION.